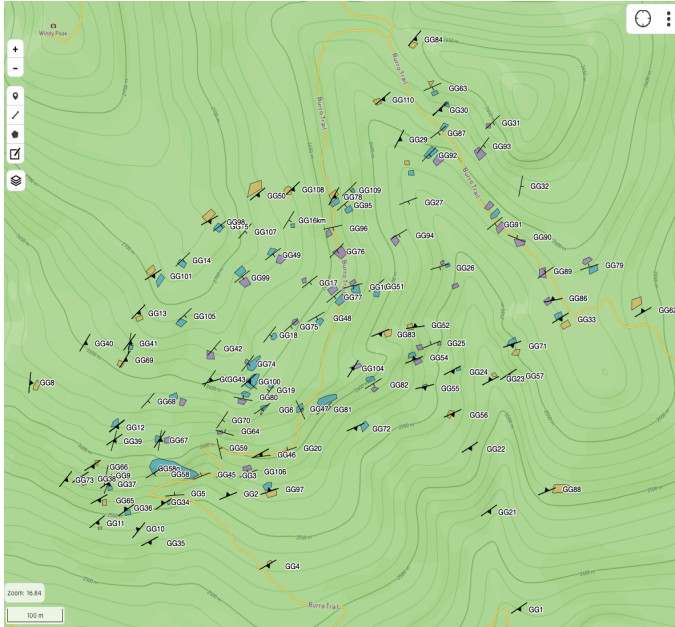
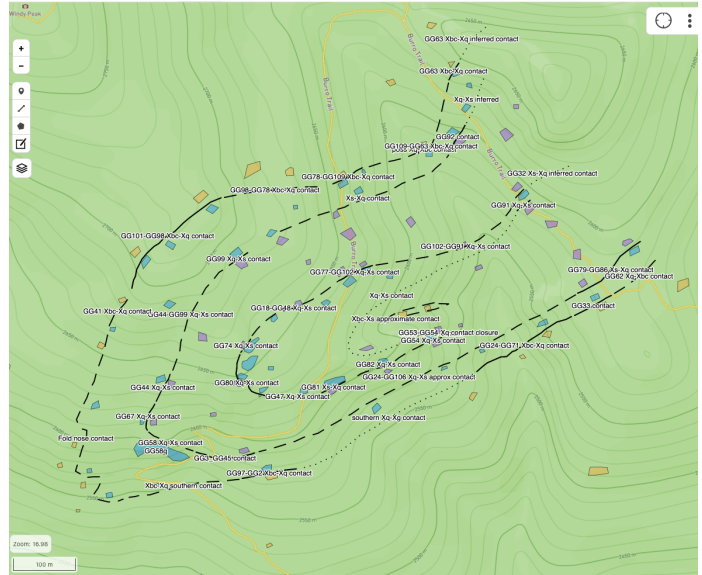


Golden Gate map from 110 stations -May 28, 2020

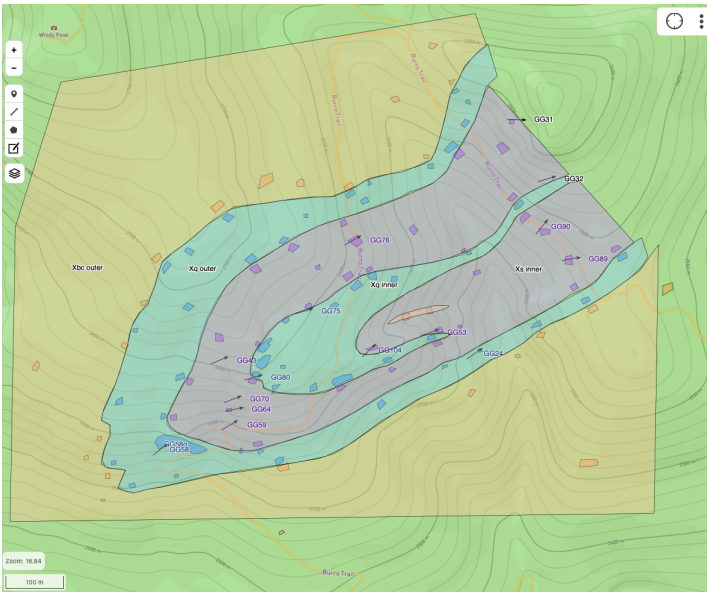
with foliation, bedding, station polygons



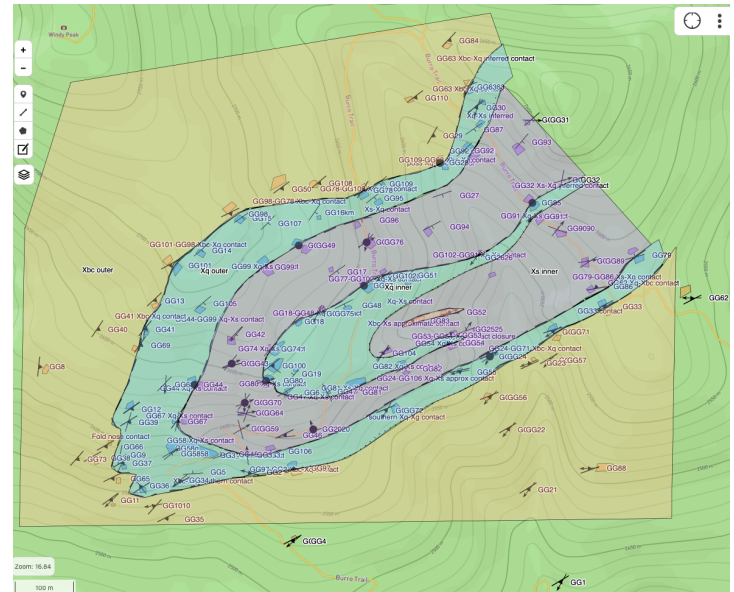
with contacts and station polygons



Station polygons, major units, fold hinges

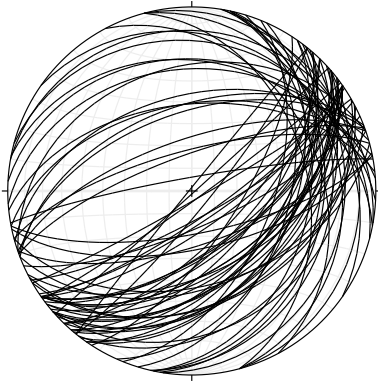


All data including fold hinges, lineations

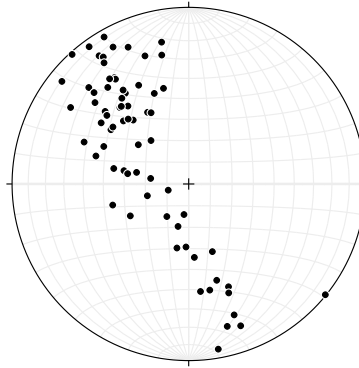


Golden Gate structural data from 110 stations

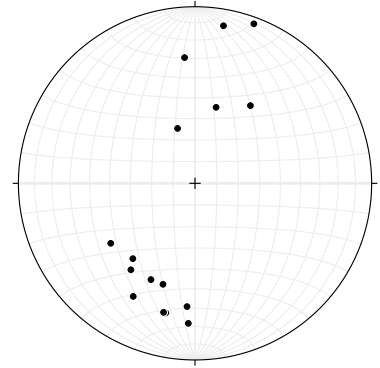
bedding+bedding parallel foliation (S0/S1), great circles, n=71



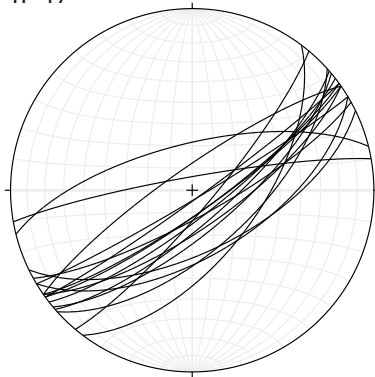
bedding+bedding parallel foliation (S0/S1), poles, n=71



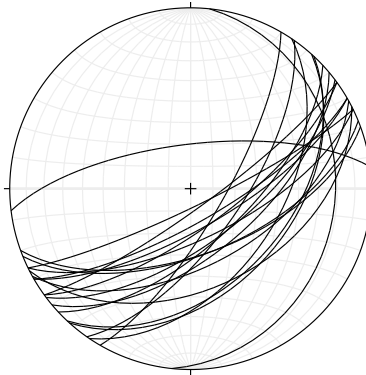
L1 mineral and stretching lineations, n=16



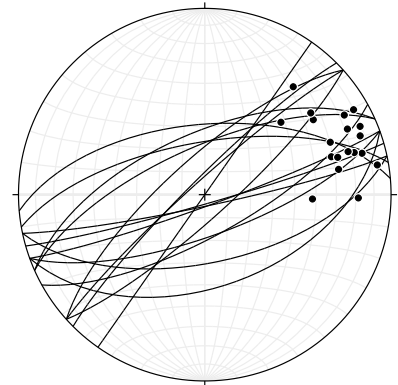
non-mylonitic foliation (S2) in quartzite and schist, great circles, n=17



non-mylonitic foliation in granodiorite (S1 or S2, probably combo), great circles, n=20



Outcrop scale F2 fold axial planes (great circles, n=16) and fold hinges (n=19)



Mylonitic foliation (great circles, n=24) and lineations (n=21)

