

**Table 1:
Participants' Original Purpose for Using EEBO**

	Undergraduates	Graduates	Faculty	Total Responses
Class Assignment	27	5	n/a	32
Independent Research	0	5	6	11
Teaching	n/a	0	3	3

**Table 2:
How Participants Learned about EEBO**

	Undergraduates	Graduates	Faculty	Total Responses ⁱ
Instructor	21	9	0	30
Librarian	6	2	4	10
Peer	0	2	2	4
Independently	1	2	0	3
Vendor Representative	n/a	1	1	2
Conference	n/a	0	1	1
Listserv	n/a	1	0	1
Literature/Brochure	n/a	0	1	1

**Table 3:
Sources of Help in Using EEBO**

	Undergraduates	Graduates	Faculty	Total Responses
Librarian	14	3	2	19
Instructor	12	5	n/a	17
Peer	1	1	0	2
Vendor Representative	0	1	1	2
No Help/Self Help	0	5	4	9
Online Help	0	0	0	0
GPTI	0	0	n/a	0

Table 4:
Effectiveness of EEBO Features by User Group

	Undergraduate Mean	Graduate Mean	Faculty Mean	Overall Mean
Online Help	3	2.3	2	2.4
Downloading/Emailing	3.6	4.4	3.3	3.8
“Select From a List” (Index Function)	2.6	3.6	4	3.4
Browse	3.1	3.8	3	3.3
Subject Headings	2.9	3.9	2.6	3.1
Availability of Keyword-Searchable Full-Text	3.3	3.1	2.6	3
Overall Mean Across Features	3.1	3.5	2.9	n/a
Effectiveness of Searches	3.2	3.7	3.4	3.4

Table 5:
Graduate Students’ Use of Complimentary Databases by Discipline

	English	History	Philosophy	Total Responses
ESTC	1	3	0	4
EEBO-TCP	3	2	0	5
Neither	2	0	2	4

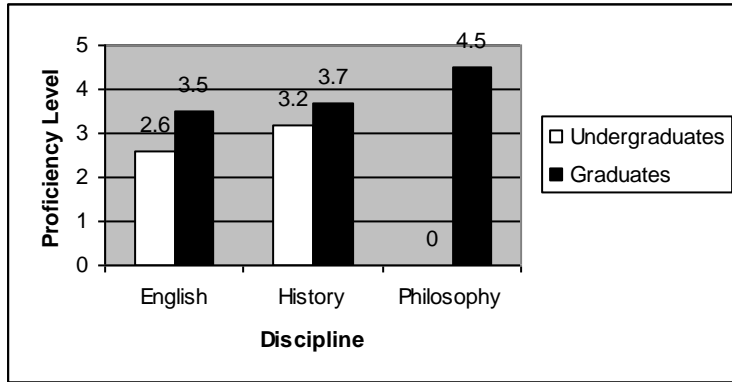
Table 6:
Type of Searches Most Often Conducted by Discipline

	Title/Author	Topic/Subject	Total Responses
History	4	8	12
Undergraduates			7
Graduates	3	4	
Faculty	0	3	3
English	8	18	26
Undergraduates			13
Graduates	1	12	
Faculty	4	2	6
Philosophy	3	1	4
Graduates	2	1	3
Faculty	1	0	1
Music Faculty	1	0	1

**Table 7:
Effectiveness of EEBO Functions By User Group**

	Undergraduate Mean	Use Rate	Graduate Mean	Use Rate	Faculty Mean	Use Rate	Overall Mean	Overall Use Rate
Online Help	3	38%	2.3	33.30%	2	33.30%	2.4	35%
Downloading/Emailing	3.6	81%	4.4	89%	3.3	50%	3.8	73%
“Select From a List” (Index Function)	2.6	76%	3.6	60%	4	50%	3.4	62%
Browse	3.1	70%	3.8	56%	3	50%	3.3	59%
Subject Headings	2.9	90%	3.9	89%	2.6	66.60%	3.1	82%
Availability of Keyword-Searchable Full-Text	3.3	100%	3.1	72%	2.6	100%	3	91%
Overall Average	3.1	n/a	3.5	n/a	2.9	n/a	n/a	n/a
Effectiveness of Searches	3.2	100%	3.7	100%	3.4	100%	3.4	100%

**Figure 1:
Proficiency Using Electronic Full-Text Library Resources by Discipline**



**Figure 2:
Searches Conducted Most Often by Undergraduate Students**

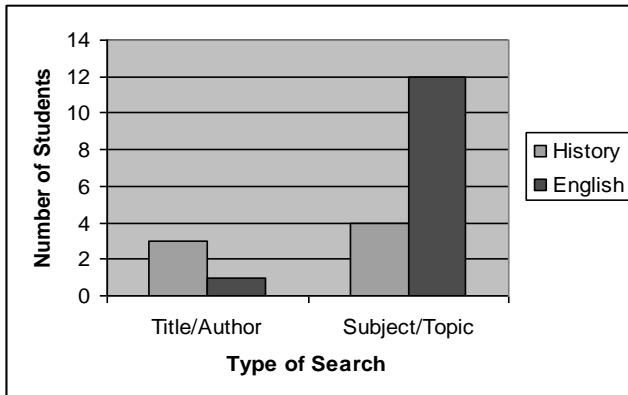


Figure 3:
EEBO Sessions by Time of Day

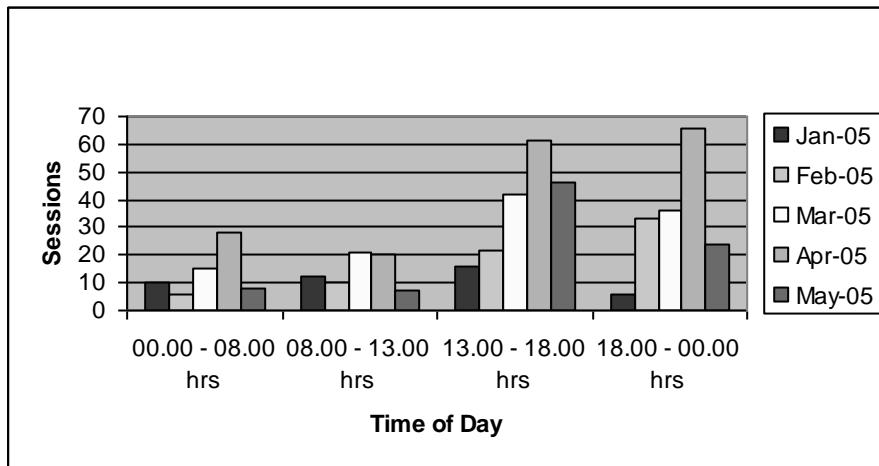
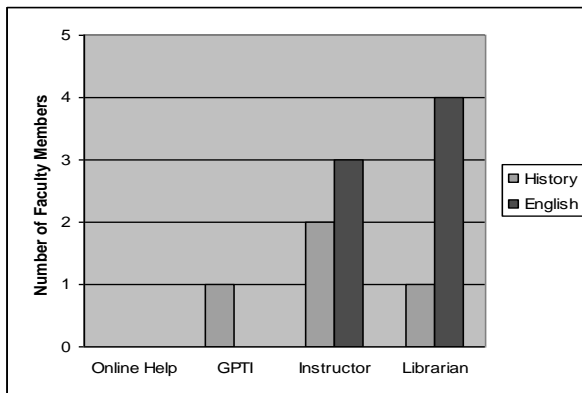


Figure 4:
Faculty Referrals for EEBO Help



ⁱ Respondents could select more than one option for certain questions, so the total number of responses for a group do not necessarily represent the total number of respondents in that group. In Table 3, for instance, two students indicated both librarian and instructor in his/her answer and both were included in the calculation.