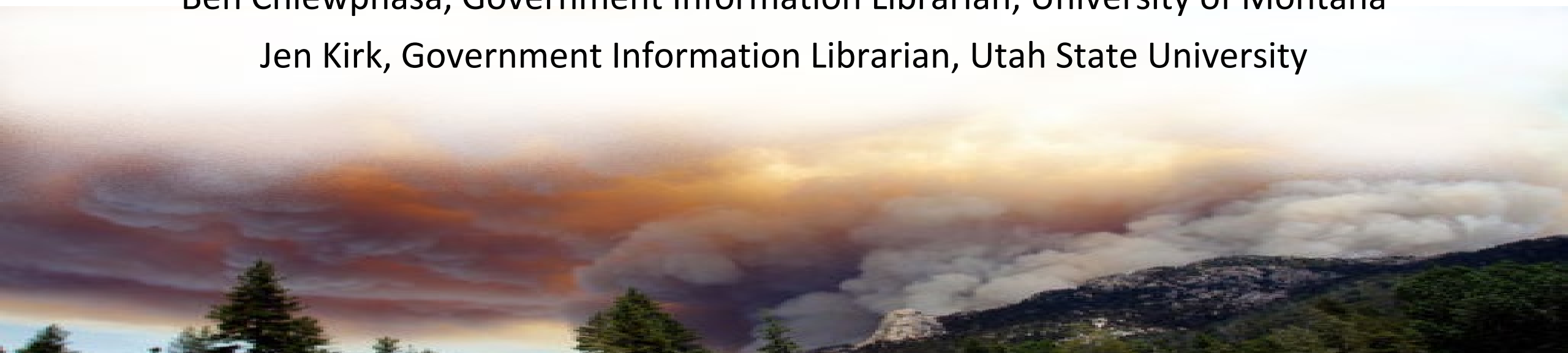


# **This Traveling Exhibit is a Disaster!**

Susanne Caro, Government Information Librarian, North Dakota State University

Ben Chiewphasa, Government Information Librarian, University of Montana

Jen Kirk, Government Information Librarian, Utah State University



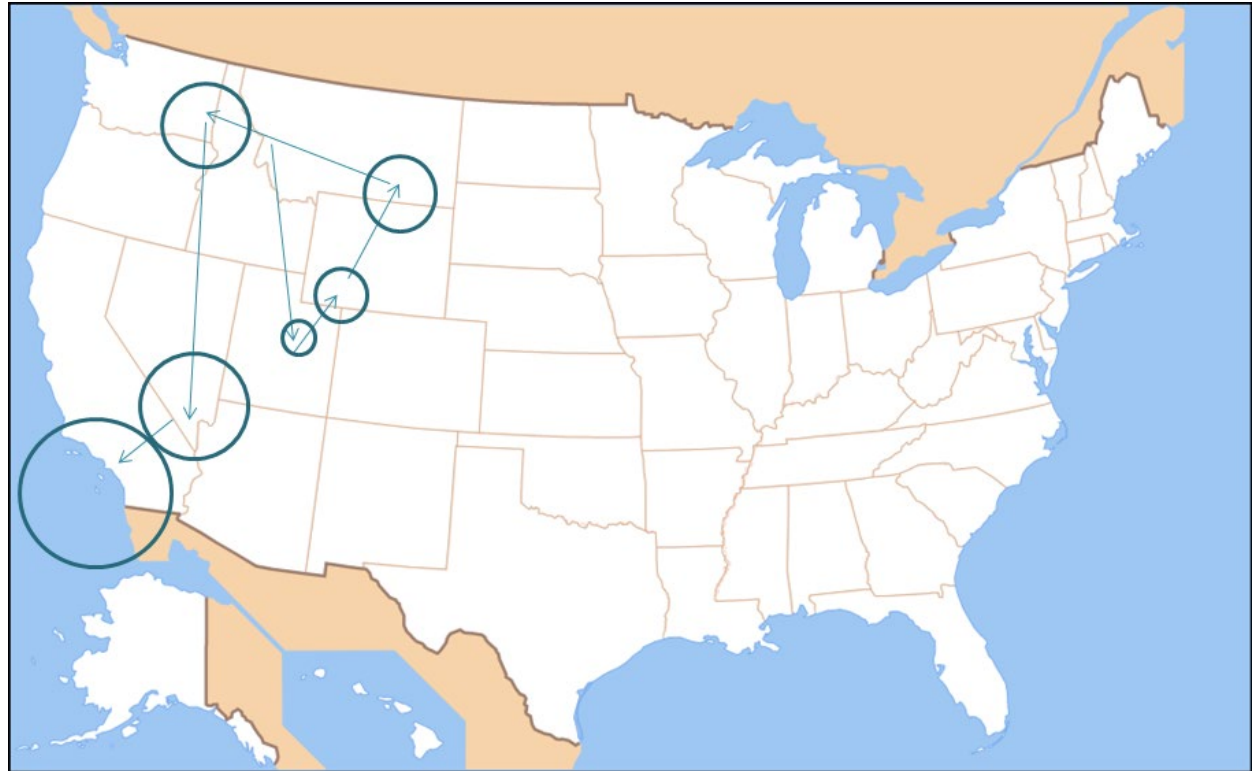
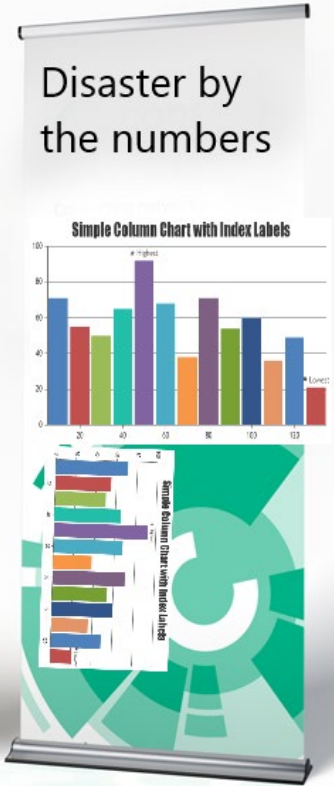
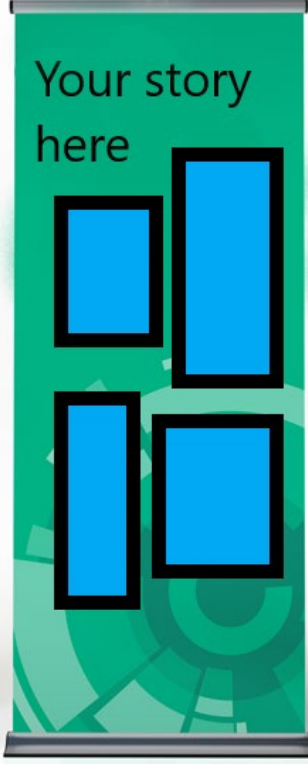
# Exhibits



# Traveling Exhibits

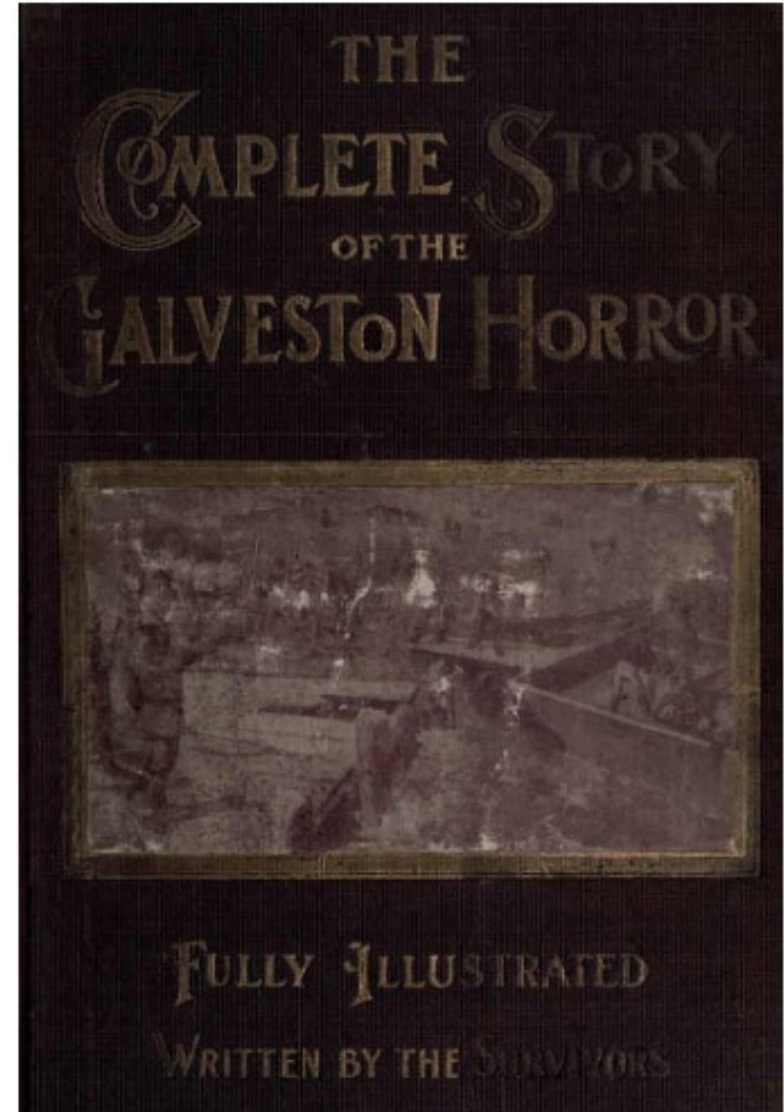


# Trying something new



# Why disasters?

- Local
- Universal
- Documented
- Personal
- Vivid imagery and stories



# Disaster Examples

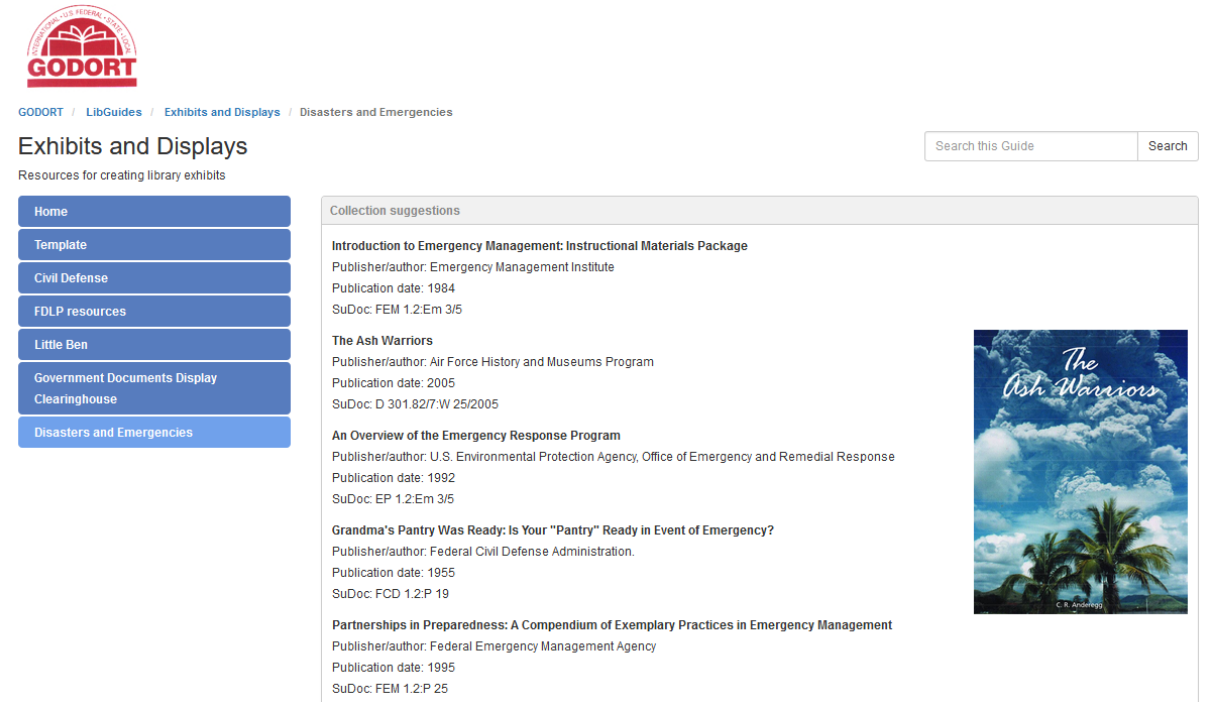
- Natural Disasters
  - Wildfire
    - [Bitterroot Valley 2000 Wildfires](#)
  - Volcanoes
    - [Mount Saint Helens](#)
  - Floods
    - [Teton Dam Disaster](#)
  - Hurricanes & Tornadoes
- Man-made disasters
  - Great Molasses Flood
- Library History
  - Has your library been impacted by a disaster?



Bitterroot Valley wildfires - Aug. 6, 2000 (Photo courtesy John McColgan, Alaska Forest Service)

# Connect to Collection Materials

- [GODORT's LibGuide on Traveling Exhibits for Disasters](#)
- Special Collections & Archives
- Capture new stories
  - Oral History
  - Collection drive - solicit donations from the community



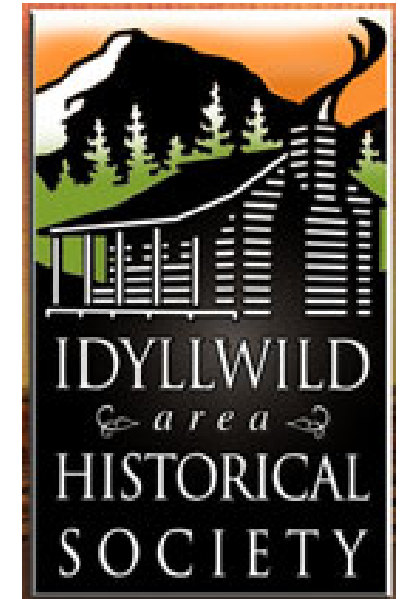
The screenshot displays the GODORT LibGuide website. At the top left is the GODORT logo, which features a red circular emblem with an open book and the text 'GODORT' below it. To the right of the logo is a breadcrumb trail: 'GODORT / LibGuides / Exhibits and Displays / Disasters and Emergencies'. Below this is the main heading 'Exhibits and Displays' and the subtitle 'Resources for creating library exhibits'. On the right side of the page, there is a search box with the text 'Search this Guide' and a 'Search' button. A vertical navigation menu on the left contains several blue buttons: 'Home', 'Template', 'Civil Defense', 'FDLP resources', 'Little Ben', 'Government Documents Display Clearinghouse', and 'Disasters and Emergencies'. The 'Disasters and Emergencies' button is highlighted. The main content area is titled 'Collection suggestions' and lists several items:

- Introduction to Emergency Management: Instructional Materials Package**  
Publisher/author: Emergency Management Institute  
Publication date: 1984  
SuDoc: FEM 1.2:Em 3/5
- The Ash Warriors**  
Publisher/author: Air Force History and Museums Program  
Publication date: 2005  
SuDoc: D 301.82/7:W 25/2005
- An Overview of the Emergency Response Program**  
Publisher/author: U.S. Environmental Protection Agency, Office of Emergency and Remedial Response  
Publication date: 1992  
SuDoc: EP 1.2:Em 3/5
- Grandma's Pantry Was Ready; Is Your "Pantry" Ready in Event of Emergency?**  
Publisher/author: Federal Civil Defense Administration.  
Publication date: 1955  
SuDoc: FCD 1.2:P 19
- Partnerships in Preparedness: A Compendium of Exemplary Practices in Emergency Management**  
Publisher/author: Federal Emergency Management Agency  
Publication date: 1995  
SuDoc: FEM 1.2:P 25

On the right side of the collection suggestions, there is a book cover for 'The Ash Warriors' by C. R. Anthony. The cover features a blue sky with white clouds and palm trees in the foreground.

# Partnerships

- For academic libraries: find compatible courses and partner with faculty to co-create community information
- Supplemental materials
  - Local historical museum?
- Accompanying programming





# Capturing Content Digitally

- Story mapping (i.e., [StoryMap JS](#), [ArcGIS StoryMaps](#), etc.)
- Contributions to one collective [Omeka](#) account/[Wordpress](#) site



# What do you think?

- Why would you pursue receiving a traveling exhibit?
- Why would your library avoid a traveling exhibit?
- What sorts of hurdles do you envision if you are asked to contribute content?
- What does your community like about traveling exhibits?
- Why are you excited about traveling exhibits?
- If given the option to participate: how much are you willing to do?
- Do you have printing facilities available and/or budget for printing?

# Want to learn more?

The logo for NDSU Libraries, featuring the text "NDSU" in a large, green, serif font, followed by "LIBRARIES" in a smaller, green, sans-serif font, separated by a thin vertical line.

Susanne Caro

[susanne.caro@ndsu.edu](mailto:susanne.caro@ndsu.edu)



Ben Chiewphasa

[ben.chiewphasa@mso.umt.edu](mailto:ben.chiewphasa@mso.umt.edu)



Jen Kirk

[jen.kirk@usu.edu](mailto:jen.kirk@usu.edu)



*\*The photo on the title slide was taken on the day Fern Valley and Idyllwild residents were ordered to evacuate as the Mountain Fire changed direction and threatened Fern Valley. Photo by Jenny Kirchner*