

RESEARCH ARTICLE

Do you see what I see? Optical morphology and visual capability of ‘disco’ clams (*Ctenoides ales*)

Lindsey F. Dougherty^{1,2,3,*}, Richard R. Dubielzig⁴, Charles S. Schobert⁴, Leandro B. Teixeira⁴ and Jingchun Li^{2,3}

ABSTRACT

The ‘disco’ clam *Ctenoides ales* (Finlay, 1927) is a marine bivalve that has a unique, vivid flashing display that is a result of light scattering by silica nanospheres and rapid mantle movement. The eyes of *C. ales* were examined to determine their visual capabilities and whether the clams can see the flashing of conspecifics. Similar to the congener *C. scaber*, *C. ales* exhibits an off-response (shadow reflex) and an on-response (light reflex). In field observations, a shadow caused a significant increase in flash rate from a mean of 3.9 Hz to 4.7 Hz ($P=0.0016$). In laboratory trials, a looming stimulus, which increased light intensity, caused a significant increase in flash rate from a median of 1.8 Hz to 2.2 Hz ($P=0.0001$). Morphological analysis of the eyes of *C. ales* revealed coarsely-packed photoreceptors lacking sophisticated structure, resulting in visual resolution that is likely too low to detect the flashing of conspecifics. As the eyes of *C. ales* are incapable of perceiving conspecific flashing, it is likely that their vision is instead used to detect predators.

KEY WORDS: Flashing, Eyes, Vision, Bivalve, Signal

INTRODUCTION

Marine invertebrates communicate through diverse channels, including visual (Adams and Caldwell, 1990; Adams and Mesterton-Gibbons, 1995; Marshall et al., 2015), chemical (Daloze et al., 2013; O’Connell, 1986; Scheuer, 1977), tactile (Caldwell and Dingle, 1976; Knowlton, 1996), and acoustic (Caldwell, 1979) signals. Visual communication can be achieved through the use of light (including UV, fluorescence, and polarization) (Bok et al., 2014; Chiou et al., 2008; Cronin, 2006; Miya et al., 2010), color (Kohda et al., 2005; Sugimoto, 2002), countershading (Penacchio et al., 2014), and shape (Allen et al., 2014; Baker, 2010). The optical receptors needed to detect visual signals exhibit great diversity in size, shape, number and complexity (Land and Nilsson, 2012). The rapid diversification of photoreceptors in invertebrate taxa was driven by the emergence of visually guided, fast locomotion during the Cambrian explosion (approximately 530–520 million years ago) (Nilsson, 1996). When

considering the evolution of vision, simple light-sensitive cells can evolve to a complex camera-type eye in a mere few hundred thousand years (Nilsson and Pelger, 1994), which may explain the extreme diversity of vision throughout the animal kingdom.

Mollusks (bivalves, gastropods, cephalopods, chitons, etc.) have the most diverse eye morphologies of any phylum (Serb and Eernisse, 2008). Several eye types have evolved within Mollusca: pit eyes can differentiate between light and shade but do not form images, and exist in some bivalves and gastropods; pinhole eyes, which provide the directionality of light but poor image quality, exist in the nautilus and the giant clam; compound eyes, which have poor image resolution but detect motion, exist in some ark clams; mirror eyes, which are image-forming, exist in scallops; camera-type eyes, the most complex eye type which forms detailed images, exist in cephalopods (Land and Nilsson, 2012). Eye placement varies in mollusks, including cephalic (head) eyes, mantle eyes, and eyes embedded in shells (Serb and Eernisse, 2008). The range of eye size within Mollusca is vast: from <100 µm in chitons (Speiser et al., 2011) to 25–40 cm in giant squid (Roper and Boss, 1982).

In bivalves, eye type varies between taxa, including photoreceptive cells in the mantle, pit eyes, mirror eyes, and compound eyes. Some bivalves possess multiple types of eyes along the mantle, such as ark clams (family Arcidae), which have both pit eyes and compound eyes (Nilsson, 1994; Patten, 1887; Waller, 1980). The number of eyes in bivalves also varies widely. In the family Cardiidae, some species have eye numbers in the tens (Morton, 2008), while others (e.g. giant clams) have eye numbers in the thousands (Wilkins, 1986). The only bivalve eyes that are known to form images are the mirror eyes of scallops (Land, 1965) and swimming scallops possess better vision than sessile scallops (Speiser and Johnsen, 2008a). Scallop eyes have multi-layer reflectors made of guanine crystals which redirect light to the double-retina (Land, 1966). Scallops can detect moving objects (Buddenbrock Von and Moller-Rache, 1953), direct swimming accordingly (Hamilton and Koch, 1996), and adjust the opening of their valves based on the size and speed of particles in the water (Speiser and Johnsen, 2008b).

Bivalves are relatively immobile, so it is thought that their eyes are used primarily to detect predators and trigger a defensive response (Nilsson, 1994). The shadow reflex, which is a neural and physiological reaction to a sudden decrease in light intensity, is widespread in both freshwater and marine bivalves (Morton, 2008). Most bivalve eyes are located on the mantle (pallial eyes), and are found on (i) the outer mantle fold (Arcoidea, Limopsoidea, Pterioidea, and Anomioidea), (ii) the middle mantle fold (Pectinoidea and Limoidea), and (iii) the inner mantle fold (Cardioidea, Tridacnoidea, and Laternulidae). Generally, pallial eyes measure the amount and direction of light, giving a distribution of light in the immediate environment of the bivalve. However, this does not mean they can perceive an image (Morton, 2008), with the exception of the mirror eyes of scallops (Land, 1965).

¹Department of Integrative Biology, University of California Berkeley, 3040 VLSB #3140, Berkeley, CA 94720, USA. ²Department of Ecology and Evolutionary Biology, University of Colorado Boulder, 334 UCB, Boulder, CO 80309, USA. ³Museum of Natural History, University of Colorado Boulder, 265 UCB, Boulder, CO 80302, USA. ⁴Pathobiological Sciences Department School of Veterinary Medicine, University of Wisconsin, Madison, 2015 Linden Drive, Madison, WI 53706, USA.

*Author for correspondence (lindsey.dougherty@colorado.edu)

 L.F.D., 0000-0002-9286-0651

This is an Open Access article distributed under the terms of the Creative Commons Attribution License (<http://creativecommons.org/licenses/by/3.0>), which permits unrestricted use, distribution and reproduction in any medium provided that the original work is properly attributed.

Received 2 February 2017; Accepted 29 March 2017

Ctenoides ales (Finlay, 1927) are sessile Indo-Pacific bivalves (Limidae) that are found attached inside small crevices on coral reefs using byssal threads. They are found from 3 to ≥ 50 m, where light intensity decreases with depth (Dougherty, 2016). They are the only bivalves known to exhibit a flashing display. The display is so vivid that it has been confused for bioluminescence (Mikkelsen and Bieler, 2003; Okubo et al., 1997), but is actually the result of structural reflection (Okutani, 1994) from silica nanospheres in the mantle edge (Dougherty et al., 2014). No studies of *C. ales* have elucidated the visual acuity or morphology of their eyes, or whether they are capable of resolving flashing in conspecifics. Here, the eyes of *C. ales* were studied to help understand the role of vision in their life history, and to determine whether the flashing display is visible to other *C. ales* organisms as a signal.

Conspecific recruitment was considered as a potential function of the flashing display of *C. ales*, as 60% of organisms were found in groups ($930 \text{ cm}^2 \pm 10 \text{ cm}$) of 2-4 individuals ($n=106$) during field sightings. Size differentials among the organisms (1-8 cm shell height) suggested settlement was asynchronous (Dougherty et al., 2014). Chemical cues are used in settlement of larval bivalves (García-Lavandeira et al., 2005; Green et al., 2013; Harvey et al., 1997; Mesías-Gansbillier et al., 2013; Wassnig and Southgate, 2012), but many species possess light-sensitive eyes during their pediveliger stage, which precedes settlement (Carriker, 1990). Therefore, vision was considered as an alternative or additional settlement signal for *C. ales* bivalves.

The eyes and dermal photosensitivity of the congener *Ctenoides scaber* (Born, 1778) have been well studied (Bell and Mpitosos,

1968; Dakin, 1928; del Pilar Gomez and Nasi, 1995; Gomez and Nasi, 1994; Mpitosos, 1973; Nasi, 1991; Wilkens, 2008). Dermal photoreceptors located near the eyes of *C. scaber* generate only off-responses (to shadows). The eyes have both off- and on-responses. The off-response (primary inhibition) occurs in hyperpolarized, ciliary cells, and the on-response occurs in depolarized rhabdomeric cells (Mpitosos, 1973). There are no synaptic interactions between the two, as the proximal and distal retinas are functionally independent of one another (Mpitosos, 1973).

Morton (2000) showed that *Ctenoides mitis* (Lamarck, 1807, previously *C. floridanus*) possess ~ 18 eyes at the base of the pallial tentacles with a lens, collagen overlap (which seals the lens), cornea, transverse fibers (which connect the middle mantle fold to the epithelia of the inner surface of the transparent haemocoel), pigmented cells and vacuolated cells (which make up the base of the retina), and an optic nerve. The eyes largely resemble those of other bivalves in the super-families Arcoidea and Limopsoidea (Waller, 1980). The only other research on limid bivalves eyes include descriptions of the eye morphology of *Acesta excavata* (Fabricius, 1779) (formerly *Lima excavata*) (Schreiner, 1896) and *L. vulgaris* (Link, 1807, formerly *L. squamosa*) (Hesse, 1896), with updated studies on the latter by von Salvini-Plawen and Mayr (1977). These studies provided valuable information on eye morphology and physiology, but do not provide information to determine whether the eyes of *C. ales* are capable of perceiving the flashing of conspecifics.

The eyes of *Ctenoides* are a critical evolutionary link in increasing eye sophistication in bivalves. The eyes of *Ctenoides*

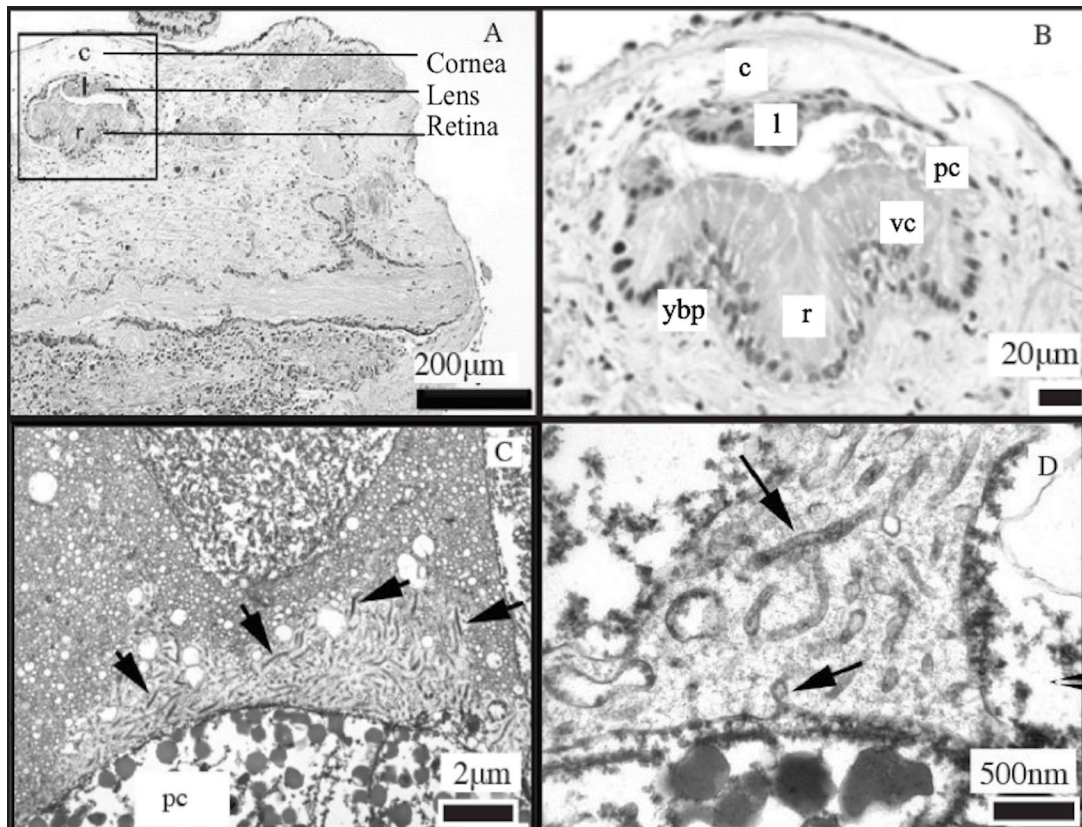


Fig. 1. Microscopy of the eyes of *Ctenoides ales*. (A) Light microscopic photomicrograph showing the eye (box) of *C. ales* embedded in the tissues of the mantle. The cornea (c), lens (l), and retina (r) are labeled. Scale bar: 200 μm . (B) Light microscopic photomicrograph showing the cornea (c), lens (l), retina (r), pigment cells (pc), vacuolated cells (vc) and yellow brown pigment (ybp). Scale bar: 20 μm . (C) Transmission electron micrograph showing the photoreceptive cells (pc) and the rhabdomeric microvilli covering the inner surface of the cell (arrows). Scale bar: 2 μm . (D) Transmission electron micrograph at higher magnification than C showing the rhabdomeric microvilli (arrows) that are tangled and widely spaced. Scale bar: 500 nm.

are located on the middle mantle fold – bridging bivalves with pallial eyes on the outer mantle fold (beneath the shell), and those with the pallial eyes on the inner folds. The trend from outer fold to inner fold reflects what may represent increasing eye sophistication as the bivalve lineages become more derived (Morton, 2000). This theory is being tested in future studies involving a more well-sampled bivalve phylogeny and ancestral state reconstruction techniques by the authors. The goals of this study were therefore threefold: (i) to contribute to the knowledge of eye morphology in *Ctenoides*, and to determine whether there is variation within the genus in an evolutionary context; (ii) to determine whether the eyes of *C. ales* are capable of perceiving the flashing in conspecifics, a trait that is unique to the *C. ales* species; (iii) if *C. ales* is not capable of perceiving the flashing in conspecifics, to determine whether *C. ales* eyes may serve another purpose, such as detecting predators. To determine if eyes are used in detecting predators, shadow responses were examined *in situ* to determine if *C. ales* responded to decreases in light intensity by changing their flash rate, and looming trials were conducted in the laboratory to determine if *C. ales* responded to changes in light intensity (when a shadow was not present) by changing their flash rate.

RESULTS

Eye morphology

The eyes of *C. ales* contained a lens, a clear cornea, and a retina (Fig. 1A). Pigmented cells and vacuolated cells, which together make up the retina, can be seen in Fig. 1B. The photoreceptive cells were positioned so that the rhabdomeric microvilli pointed in the direction of the cornea (Fig. 1C). The rhabdomeric microvilli averaged 2.82 μm height by 0.08 μm width ($\pm 0.34 \mu\text{m}$, 0.01 μm) and were spaced an average of 0.13 μm apart ($\pm 0.03 \mu\text{m}$). They appear tangled and are widely spaced (Fig. 1D), with no complex structural packing. The small size of the eye combined with the irregular shape of the retina makes it difficult to determine an accurate focal length or receptor separation length, which would allow for a calculation of the inter-receptor angle and maximum resolvable spatial frequency (Land and Nilsson, 2002). The morphological description of the eye of *C. scaber* by Bell and Mpitsos (1968) and of *C. mitis* by Morton (2000) are similar to the morphology of the eye of *C. ales* found in this study.

Shadow reflex

When a shadow obscured *C. ales in situ*, their flash rate (Hz) increased significantly in the 5 s following the stimulus (Mann–Whitney, $P=0.0016$, $n=7$). The flash rate increased from a pre-stimulus median of 3.8 Hz to a post-stimulus median of 4.6 Hz (Fig. 2A). The sources of the shadows in the video are unknown, as video was taken without scuba divers present, and the animals causing the shadows were not recorded by the camera.

Looming trials

When a looming stimulus (a white, 25 cm² rectangle) was moved toward *C. ales*, their flash rate (Hz) increased significantly in the 5 s following the stimulus (Mann–Whitney, $P=0.0001$, $n=18$). The flash rate increased from a pre-stimulus median of 1.8 Hz to a post-stimulus median of 2.2 Hz (Fig. 2B).

DISCUSSION

Morphological analysis of the eyes of *C. ales* revealed a lack of complex structure and coarsely-packed photoreceptors. Without refined structure to detect the direction of light (Land and Nilsson, 2012), it is very unlikely that *C. ales* is capable of resolving the

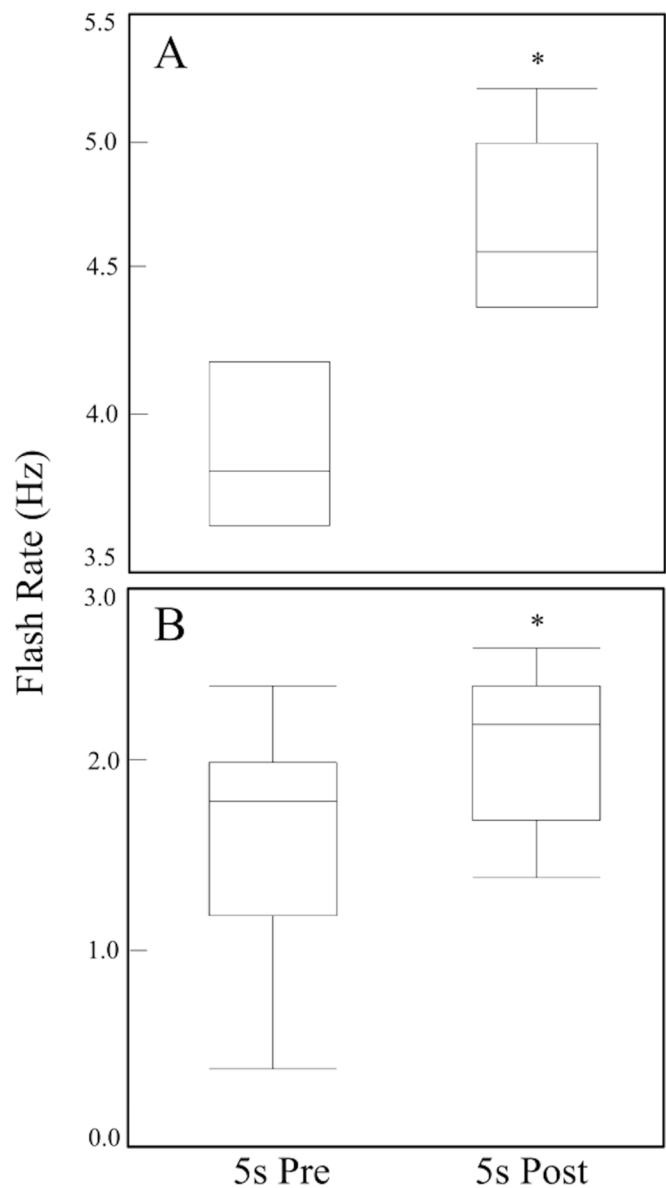


Fig. 2. Changes in flash rate (Hz) of *Ctenoides ales* in response to shadow and looming stimuli. (A) Measured for 5 s before and 5 s after a shadow obscured *C. ales in situ* ($n=7$). (B) Measured for 5 s before and 5 s after looming stimulus (25 cm² Styrofoam) in laboratory ($n=18$). Flash rates in both experiments increased significantly after stimulus. Box and whiskers indicate minimum, maximum, median, and upper and lower quartiles; asterisk indicates a significant increase; Mann–Whitney tests were used; (A) $P=0.0016$, (B) $P=0.0001$.

flashing of other *C. ales* organisms, as the flashing display is small (mantle reflective strip <1 mm wide, <3 cm long) and rapid (≤ 5.2 Hz), and their visual resolution is likely very low. These results suggest the flashing of *C. ales* is not a signal intended for conspecifics, and that the clustered groupings observed in the field may be the result of a chemical cue that aids in juvenile settlement, similar to other bivalves (García-Lavandeira et al., 2005; Green et al., 2013; Harvey et al., 1997; Mesias-Gansbiller et al., 2013; Wassnig and Southgate, 2012). *C. ales* responded to both a looming stimulus (increased light intensity) and shadows (decreased light intensity) by significantly increasing their flash rate. The morphological similarity of the eye of *C. ales* to the eye of the congener *C. scaber* suggests that *C. ales* eyes are also responsive to light increases and decreases

(Mpitosos, 1973). It is therefore probable that their vision is used for predator detection, as in *C. scaber*.

The eyes in the family Limidae, to which *C. ales* belongs, have not been investigated as thoroughly as other families such as Pectinidae (scallops), likely because they are much smaller, fewer, and more hidden within the mantle tentacles (Morton, 2008). Of the ten genera in Limidae, only *Limaria* do not possess eyes (Morton, 1979). Whether this is related to their unique defensive mechanism of tentacle autotomy and their inability to fully retract their tentacles to close their shell (Morton, 1979), is unknown. Of the remaining genera, only some species possess pallial eyes (Dakin, 1928), including *Lima* and *Ctenoides*. The morphological structure of the eyes of *C. ales* is remarkably similar to the structure of the eyes of *C. mitis* (previously *C. floridanus*) (Morton, 2000). The similarity is important for two reasons. First, it suggests that although *C. ales* evolved a unique flashing display that no other bivalve exhibits, there does not seem to be any corresponding change in eye morphology. Second, there is a drastic difference in eye complexity between these *Ctenoides* species and *Lima vulgaris* (formerly *Lima squamosa*) (von Salvini-Plawen and Mayr, 1977) from a closely related genus. The eyes of *L. vulgaris* are described as everse pinhole eyes, with little more than a vitreous mass and retinal cells. The difference in eye complexity between these two genera is notable, and future studies would benefit from phylogenetic comparative analyses of eye evolution within Limidae.

Due to the variety of eye types in Limidae, eye evolution within this group needs to be solved using a more comprehensive phylogeny and detailed eye studies of more limid bivalves. Many molecular studies elucidate the phylogenetic relationships of a few limid bivalves (González et al., 2015; Giribet and Wheeler, 2002; Plazzi et al., 2011; Serb, 2008), but none include a comprehensive analysis of the relationships among *Ctenoides*, *Lima*, *Limaria*, and the outgroup *Pectinidae* (scallops). This line of research should be of great interest in the context of invertebrate eye evolution and convergent evolution of complex morphological traits, and is being pursued in future studies by the authors.

Since the flashing display of *C. ales* is not visible to conspecifics, other purposes for the flashing must be considered. Elaborate displays in nature are generally used for three purposes: (i) to attract conspecifics (Beekman et al., 2016; Lange et al., 2013; O'Day, 1974), which was considered in this study; (ii) to lure prey items (light, color, or mimicry designed to attract food items) (Hanlon and Messenger, 1996; Johnsen et al., 1999; O'Day, 1974; Shallenberger and Madden, 1973; Shimazaki and Nakaya, 2004), which was tested

in a separate study (Dougherty et al., 2016); or (iii) to communicate aposematism (warning coloration signaling distastefulness) (Hanlon and Messenger, 1996; Williams et al., 2011). The significant increase in the flash rate of *C. ales* when an increase or decrease in light occurs, combined with the visibility of the flashing of *C. ales* to many of its potential predators (Dougherty et al., 2014), suggest the flashing may function as a warning (aposematic) signal. This hypothesis is being considered in future studies.

MATERIALS AND METHODS

C. ales bivalves were obtained from Blue Zoo Aquatics (Hawthorne, CA, USA). All bivalves had a shell height of >4 cm. The size at which this species changes from male to female (protandrous hermaphroditism) is unknown. Prior to experiments, the bivalves were housed in a single 375-liter tank with a water temperature of 25–27°C. They were given a 12 h light:12 h dark light regime, and each bivalve was given 1 ml of phytoplankton mixture (Phytofeast©, Campbell, CA, USA) three times per week. Experiments were conducted during the day, as the mantle of *C. ales* (which causes the flashing) is reflective, and therefore only visible when there is ambient light.

Eye morphology

To examine the structure of the eyes of *C. ales*, two eyes (~1 mm²) from one *C. ales* bivalve were removed and fixed in 2.5% glutaraldehyde with a sterile seawater buffer. One of the eyes was embedded in paraffin, sectioned at 5 µm and stained with hematoxylin, which stains nucleic acids, and eosin, which stains protein. The other eye was treated with 1% OsO₄ in PBS for 2 h at room temperature followed by three 10-min washes with a 0.1 M sodium acetate buffer. Tissues were then stained with 2% uranyl acetate in a sodium acetate buffer for 1 h at room temperature, washed in buffer, dehydrated in a graded ethanol series (40–100%), and infiltrated with propylene oxide-812 resin (1005 Embed 812; EMS, Fort Washington, PA, USA). The sample was embedded with fresh 100% 812 resin in molds and polymerized in a 60°C oven for 36 h. Ultrathin sections (90 nm) were analyzed using a JEOL 100CX electron microscope (JEOL Ltd., Tokyo, Japan).

Shadow reflex

To determine whether *C. ales* responded to shadows, video was taken of *C. ales* individuals *in situ* in Indonesia (Lembeh Strait, 1°27' N, 125° 14' E and Kri Island, 0° 34' S, 130° 40' E). Go Pro Hero3[®] video cameras were attached to 4 kg weights using zip ties, and an underwater light (Light & Motion Gobe[®], Marina, CA, USA) was aimed at the area of interest in which the *C. ales* individual was attached. The depth where recordings were taken varied from 10–15 m. A total of 16 h and 57 min were recorded without scuba divers present. The camera setups were left in place and then retrieved on subsequent dives. A total of seven events where a shadow passed across

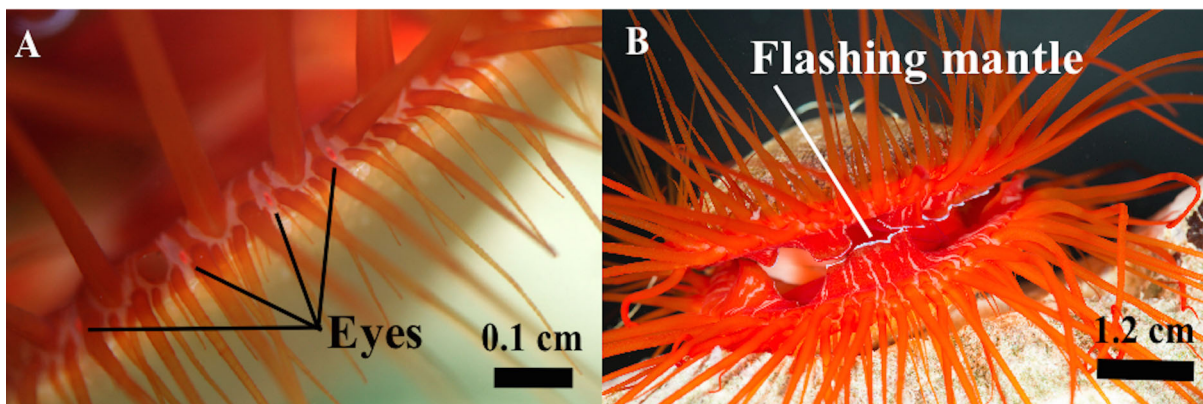


Fig. 3. The eyes of *Ctenoides ales*. (A) Macro photograph of the eyes of *C. ales*. Scale bar: 0.1 cm. Photo credit: L. Dougherty. (B) Whole-organism photograph of *C. ales*, showing the location of the flashing line on the mantle. Scale bar: 1.2 cm. Photo credit: R. Caldwell.

the clam were recorded. Video was analyzed 5 s before and 5 s after the shadow, and the flash rate (Hz) was recorded.

Looming trials

To test whether the eyes of *C. ales* (Fig. 3A) were capable of detecting movement of an object (such as a predator) when a shadow was not present, a looming stimulus (Cartron et al., 2013a,b; Gallagher and Northmore, 2006; Herberholz and Marquart, 2012) was used. The behavioral reaction measured in this study was the flash rate (Hz) of *C. ales* (Fig. 3B). Looming trials were conducted in a 37-liter tank with black boards surrounding all sides to block external stimuli, except the front, where the stimulus was presented and the flash rate of *C. ales* was recorded on video (Sony CyberShot® DSC-W7 Digital Camera). A white, 25 cm² rectangle was used as the stimulus. The stimulus was quickly (≤ 1 s/30 cm) moved toward the experimental clam ($n=18$) 30 s after video began recording. The stimulus stayed in place for 30 s and then recording was stopped. Preliminary trials indicated changes in flash rates were brief (≤ 5 s), so the flash rate was analyzed by viewing the recording 5 s before and 5 s after the looming stimulus, and recording the flash rate (Hz).

Acknowledgements

The authors would like to thank D. Speiser of the University of South Carolina for manuscript feedback, N. Patel, R. Null, and R. Caldwell from the University of California, Berkeley and A. Nahm-Kingston of the University of South Carolina for help with experimental design, and A. Niebergall and K. Meyer, of the University of California Berkeley for help conducting experiments.

Competing interests

The authors declare no competing or financial interests.

Author contributions

L.F.D. designed and conducted the experiments. R.R.D., C.S.S. and L.B.T. performed light and transmission electron microscopy and gave manuscript feedback. L.F.D. and J.L. wrote the manuscript.

Author contributions metadata

Conceptualization: L.F.D.; Methodology: L.F.D., R.R.D., C.S.S., L.B.T.; Validation: L.F.D.; Formal analysis: L.F.D., R.R.D., C.S.S., L.B.T.; Investigation: L.F.D.; Data curation: L.F.D.; Writing - original draft: L.F.D., J.L.; Writing - review & editing: L.F.D., J.L.; Supervision: L.F.D.; Project administration: L.F.D.; Funding acquisition: L.F.D.

Funding

Funding to L.F.D. was provided in part by the University of California Museum of Paleontology. L.F.D. and J.L. were supported by Museum of Natural History at the University of Colorado Boulder.

References

- Adams, E. S. and Caldwell, R. L. (1990). Deceptive communication in asymmetric fights of the stomatopod crustacean *Gonodactylus bredini*. *Anim. Behav.* **39**, 706-716.
- Adams, E. S. and Mesterton-Gibbons, M. (1995). The cost of threat displays and the stability of deceptive communication. *J. Theor. Biol.* **175**, 405-421.
- Allen, J. J., Bell, G. R. R., Kuzirian, A. M., Velankar, S. S. and Hanlon, R. T. (2014). Comparative morphology of changeable skin papillae in octopus and cuttlefish. *J. Morphol.* **275**, 371-390.
- Baker, B. (2010). Unusual adaptations: evolution of the mimic octopus. *Bioscience* **60**, 962-962.
- Beekman, M., Nieuwenhuis, B., Ortiz-Barrientos, D., Evans, J. P. and Beekman, M. (2016). Sexual selection in hermaphrodites, sperm and broadcast spawners, plants and fungi. *Philos. Trans. R. Soc. B Biol. Sci.* **371**, 20150541.
- Bell, A. and Mpitsos, G. J. (1968). Morphology of the eye of the flame fringe clam, *Lima scabra*. *Biol. Bull.* **135**, 414-415.
- Bok, M. J., Porter, M. L., Place, A. R. and Cronin, T. W. (2014). Biological sunscreens tune polychromatic ultraviolet vision in mantis shrimp. *Curr. Biol.* **24**, 1636-1642.
- Buddenbrock Von, W. and Moller-Rache, I. (1953). Ober den Lichtsinn von *Pecten*. *Pubbl. staz. zool. Napoli* **24**, 217-245.
- Caldwell, R. I. (1979). Cavity occupation and defensive behaviour in the stomatopod *Gonodactylus festai*: evidence for chemically mediated individual recognition. *Anim. Behav.* **21**, 194-201.
- Caldwell, L. and Dingle, H. (1976). Stomatopods. *Sci. Am.* **234**, 80-89.
- Carriker, M. R. (1990). Functional significance of the pediveliger in bivalve development. In *The Bivalvia* (ed. B. Morton), pp. 267-282. Hong Kong University Press: Hong Kong.
- Cartron, L., Shashar, N., Dickel, L. and Darmaillacq, A.-S. (2013a). Effects of stimuli shape and polarization in evoking deimatic patterns in the European cuttlefish, *Sepia officinalis*, under varying turbidity conditions. *Invert. Neurosci.* **13**, 19-26.
- Cartron, L., Josef, N., Lerner, A., McCusker, S. D., Darmaillacq, A.-S., Dickel, L. and Shashar, N. (2013b). Polarization vision can improve object detection in turbid waters by cuttlefish. *J. Exp. Mar. Biol. Ecol.* **447**, 80-85.
- Chiou, T.-H., Kleinlogel, S., Cronin, T., Caldwell, R., Loeffler, B., Siddiqi, A., Goldizen, A. and Marshall, J. (2008). Circular polarization vision in a stomatopod crustacean. *Curr. Biol.* **18**, 429-434.
- Cronin, T. W. (2006). Stomatopods. *Curr. Biol.* **16**, R235-R236.
- Dakin, W. J. (1928). The Eyes of *Pecten*, *Spondylus*, *Amussium* and Allied Lamellibranchs, with a short discussion on their evolution. *Proc. R. Soc. London B Biol. Sci.* **103**, 355-365.
- Daloz, D., Braekman, C. Tursch, B. (2013). Animals and environmental fitness: physiological and biochemical aspects of adaptation and ecology. In *Animals and Environmental Fitness: Physiological and Biochemical Aspects of Adaptation and Ecology: Invited Lectures* (ed. R. Gilles), pp. 243-261. Elsevier: Exeter, UK.
- del Pilar Gomez, M. and Nasi, E. (1995). Activation of light-dependent K⁺ channels in ciliary invertebrate photoreceptors involves cGMP but not the IP₃/Ca²⁺ cascade. *Neuron* **15**, 607-618.
- Dougherty, L. F. (2016). Distribution, habitat, and ecology of the "disco" clam, *Ctenoides ales*. In *Oysters and Clams: Cultivation, Habitat Threats and Ecological Impact* (ed. J. L. Romalde), pp. 1-14. Nova: New York.
- Dougherty, L. F., Johnsen, S., Caldwell, R. L. and Marshall, N. J. (2014). A dynamic broadband reflector built from microscopic silica spheres in the "disco" clam *Ctenoides ales*. *J. R. Soc. Interface* **11**, 20140407.
- Dougherty, L. F., Niebergall, A. K. and Meyer, K. E. (2016). Testing flashing as a prey lure in the "disco" clam, *Ctenoides ales*. *Am. Malacol. Bull.* **34**, 160-168.
- Gallagher, S. P. and Northmore, D. P. M. (2006). Responses of the teleostean nucleus isthmi to looming objects and other moving stimuli. *Vis. Neurosci.* **23**, 209-219.
- García-Lavandeira, M., Silva, A., Abad, M., Pazos, A. J., Sánchez, J. L. and Pérez-Parallé, M. L. (2005). Effects of GABA and epinephrine on the settlement and metamorphosis of the larvae of four species of bivalve molluscs. *J. Exp. Mar. Biol. Ecol.* **316**, 149-156.
- Giribet, G. and Wheeler, W. (2002). On bivalve phylogeny: a high-level analysis of the Bivalvia (Mollusca) based on combined morphology and DNA sequence data. *Invertebr. Biol.* **121**, 271-324.
- Gomez, M. P. and Nasi, E. (1994). The light-sensitive conductance of hyperpolarizing invertebrate photoreceptors: a patch-clamp study. *J. Gen. Physiol.* **103**, 939-956.
- González, V. L., Andrade, S. C. S., Bieler, R., Collins, T. M., Dunn, C. W., Mikkelsen, P. M., Taylor, J. D. and Giribet, G. (2015). A phylogenetic backbone for Bivalvia: an RNA-seq approach. *Proc. R. Soc. B Biol. Sci.* **282**, 20142332.
- Green, M. A., Waldbusser, G. G., Hubacz, L., Cathcart, E. and Hall, J. (2013). Carbonate mineral saturation state as the recruitment cue for settling bivalves in marine muds. *Estuar. Coast.* **36**, 18-27.
- Hamilton, P. V. and Koch, K. M. (1996). Orientation toward natural and artificial grassbeds by swimming bay scallops, *Argopecten irradians* (Lamarck, 1819). *J. Exp. Mar. Biol. Ecol.* **199**, 79-88.
- Hanlon, R. T. and Messenger, J. B. (1996). *Cephalopod Behaviour*. Cambridge University Press: Cambridge.
- Harvey, M., Bourget, E. and Gagné, N. (1997). Spat settlement of the giant scallop, *Placopecten magellanicus* (Gmelin, 1791), and other bivalve species on artificial filamentous collectors coated with chitinous material. *Aquaculture* **148**, 277-298.
- Herberholz, J. and Marquart, G. D. (2012). Decision making and behavioral choice during predator avoidance. *Front. Neurosci.* **6**, 125.
- Hesse, R. (1896). Untersuchungen über die Organe der Lichtempfindung bei niederen Tieren. I: Die Organe der Lichtempfindung bei den Lumbriciden. *Zeitschrift für Psychol. und Physiol. der Sinnesorgane* **61**, 393-419.
- Johnsen, S., Balsler, E. J., Fisher, E. C. and Widder, E. A. (1999). Bioluminescence in the deep-sea cirrate octopus *Stauroteuthis syrtensis verrill* (Mollusca: Cephalopoda). *Biol. Bull.* **197**, 26-39.
- Knowlton, N. (1996). Trench warfare on the shore: interclonal aggression in sea anemones. *Trends Ecol. Evol.* **11**, 271-272.
- Kohda, M., Sasaki, K., Sakai, Y., Ohnishi, N. and Matsumoto, K. (2005). Preliminary study on female choice of mates versus sites in a wrasse, *Cirrhilabrus temminckii*. *Ichthyol. Res.* **52**, 406-409.
- Land, M. F. (1965). Image formation by a concave reflector in the eye of the scallop, *Pecten maximus*. *J. Physiol.* **179**, 138-153.
- Land, M. F. (1966). A multilayer interference reflector in the eye of the scallop, *Pecten maximus*. *J. Exp. Biol.* **45**, 433-447.
- Land, M. F. and Nilsson, D. E. (2002). *Animal eyes*. Oxford University Press: New York.
- Land, M. F. and Nilsson, D. E. (2012). *Animal Eyes*. Oxford University Press: New York.
- Lange, R., Reinhardt, K., Michiels, N. K. and Anthes, N. (2013). Functions, diversity, and evolution of traumatic mating. *Biol. Rev.* **88**, 585-601.

- Marshall, J., Carleton, K. L. and Cronin, T. (2015). Colour vision in marine organisms. *Curr. Opin. Neurobiol.* **34**, 86-94.
- Mesías-Gansbiller, C., Silva, A., Maneiro, V., Pazos, A., Sánchez, J. L. and Pérez-Parallé, M. L. (2013). Effects of chemical cues on larval settlement of the flat oyster (*Ostrea edulis* L.): A hatchery approach. *Aquaculture* **376–379**, 85-89.
- Mikkelsen, P. M. and Bieler, R. (2003). Systematic revision of the western Atlantic file clams, *Lima* and *Ctenoides* (Bivalvia: Limoida: Limidae). *Invertebr. Syst.* **17**, 667-710.
- Miya, M., Pietsch, T. W., Orr, J. W., Arnold, R. J., Satoh, T. P., Shedlock, A. M., Ho, H.-C., Shimazaki, M., Yabe, M., Nishida, M. et al. (2010). Evolutionary history of anglerfishes (Teleostei: Lophiiformes): a mitogenomic perspective. *BMC Evol. Biol.* **10**, 58.
- Morton, B. (1979). A comparison of lip structure and function correlated with other aspects of the functional morphology of *Lima lima*, *Limaria* (*Platylimaria*) *fragilis*, and *Limaria* (*Platylimaria*) *hongkongensis* sp.nov. (Bivalvia: Limacea). *Can. J. Zool.* **57**, 728-742.
- Morton, B. (2000). The pallial eyes of *Ctenoides floridanus* (Bivalvia: Limoidea). *J. Molluscan Stud.* **66**, 449-455.
- Morton, B. (2008). The evolution of eyes in the bivalvia: new insights. *Am. Malacol. Bull.* **26**, 35-45.
- Mpitsos, G. (1973). Physiology of vision in the mollusk *Lima scabra*. *J. Neurophysiol.* **36**, 371-383.
- Nasi, E. (1991). Electrophysiological properties of isolated photoreceptors from the eye of *Lima scabra*. *J. Gen. Physiol.* **97**, 17-34.
- Nilsson, D.-E. (1994). Eyes as optical alarm systems in fan worms and ark clams. *Philos. Trans. R. Soc. Lond. Ser. B Biol. Sci.* **346**, 195-212.
- Nilsson, D.-E. (1996). Eye ancestry: old genes for new eyes. *Curr. Biol.* **6**, 39-42.
- Nilsson, D.-E. and Pelger, S. (1994). A pessimistic estimate of the time required for an eye to evolve. *Proc. Biol. Sci.* **256**, 53-58.
- O'Connell, R. J. (1986). Chemical communication in invertebrates. *Experientia* **42**, 232-241.
- O'Day, W. (1974). Bacterial luminescence in the deep-sea anglerfish *Oneirodes acanthias*. *Contrib. Sci.* **255**, 1-12.
- Okubo, S., Kurokawa, T., Suzuki, T., Funakoshi, S. and Tsujii, T. (1997). On the mechanism of streak-like flash on the mantle of *Ctenoides ales* (Bivalvia : Limidae). *Japanese J. Malacol. Venus* **56**, 259-269.
- Okutani, T. (1994). A new discovery of streak-like flashing luminescence in *Ctenoides ales* (Finley, 1927) (Bivalvia: Limidae). *Venus (Japanese J. Malacol.)* **53**, 57-59.
- Patten, W. (1887). Eyes of molluscs and arthropods. *J. Morphol.* **1**, 67-92.
- Penacchio, O., Lovell, P. G., Ruxton, G. D., Cuthill, I. C. and Harris, J. M. (2014). Countershading camouflage: Exploiting photons to break shape-from-shading inference. *Perception*. **5**, 471-471.
- Plazzi, F., Ceregato, A., Taviani, M. and Passamonti, M. (2011). A molecular phylogeny of bivalve mollusks: Ancient radiations and divergences as revealed by mitochondrial genes. *PLoS ONE* **6**, e27147.
- Roper, C. F. E. and Boss, K. J. (1982). The giant squid. *Sci. Am.* **246**, 96-105.
- Scheuer, P. J. (1977). Chemical communication of marine invertebrates. *Paul J. Scheuer Source Biosci.* **27**, 664-668.
- Schreiner, K. E. (1896). Die Augen bei *Pecten* und *Lima*. In *Bergens Museums Aarbog for 1892 -1946*, pp. 55.
- Serb, J. A. (2008). Toward developing models to study the disease, ecology, and evolution of the eye in Mollusca. *Am. Malacol. Bull.* **26**, 3-18.
- Serb, J. M. and Eernisse, D. J. (2008). Charting evolution's trajectory: using molluscan eye diversity to understand parallel and convergent evolution. *Evol. Educ. Outreach* **1**, 439-447.
- Shallenberger, R. J. and Madden, W. D. (1973). Luring behavior in the scorpionfish, *Iracundus signifer*. *Source Behav.* **47**, 33-47.
- Shimazaki, M. and Nakaya, K. (2004). Functional anatomy of the luring apparatus of the deep-sea ceratioid anglerfish *Cryptopsaras couesii* (Lophiiformes: Ceratiidae). *Ichthyol. Res.* **51**, 33-37.
- Speiser, D. I. and Johnsen, S. (2008a). Comparative morphology of the concave mirror eyes of scallops (Pectinoidea)*. *Am. Malacol. Bull.* **26**, 27-33.
- Speiser, D. I. and Johnsen, S. (2008b). Scallops visually respond to the size and speed of virtual particles. *J. Exp. Biol.* **211**, 2066-2070.
- Speiser, D. I., Eernisse, D. J. and Johnsen, S. (2011). A chiton uses aragonite lenses to form images. *Curr. Biol.* **21**, 665-670.
- Sugimoto, M. (2002). Morphological color changes in fish: Regulation of pigment cell density and morphology. *Microsc. Res. Tech.* **58**, 496-503.
- von Salvini-Plawen, L. and Mayr, E. (1977). On the evolution of photoreceptors and eyes. *J. Evol. Biol. Vol.* **10**, 207-263.
- Waller, T. R. (1980). Scanning electron microscopy of shell and mantle in the order Arcoidea (Mollusca: Bivalvia). *Smithson. Contrib. to Zool.* **313**, 1-58.
- Wassnig, M. and Southgate, P. C. (2012). Effects of settlement cues on behaviour and substrate attachment of hatchery reared winged pearl oyster (*Pteria penguin*) larvae. *Aquaculture* **344–349**, 216-222.
- Wilkins, L. A. (1986). The visual system of the giant clam *Tridacna*: behavioral adaptations. *Biol. Bull.* **170**, 393-408.
- Wilkins, L. A. (2008). Primary inhibition by light: a unique property of bivalve photoreceptors. *Am. Malacol. Bull.* **26**, 101-109.
- Williams, B. L., Lovenburg, V., Huffard, C. L. and Caldwell, R. L. (2011). Chemical defense in pelagic octopus paralarvae: Tetrodotoxin alone does not protect individual paralarvae of the greater blue-ringed octopus (*Hapalochlaena lunulata*) from common reef predators. *Chemoecology* **21**, 131-141.