



Bridging the Distance **Reimagining Quality Education** **for Rural Students**

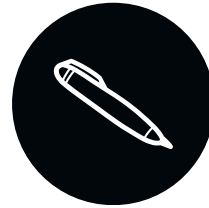


By: Aloukika Patro & Hyma Jujjuru



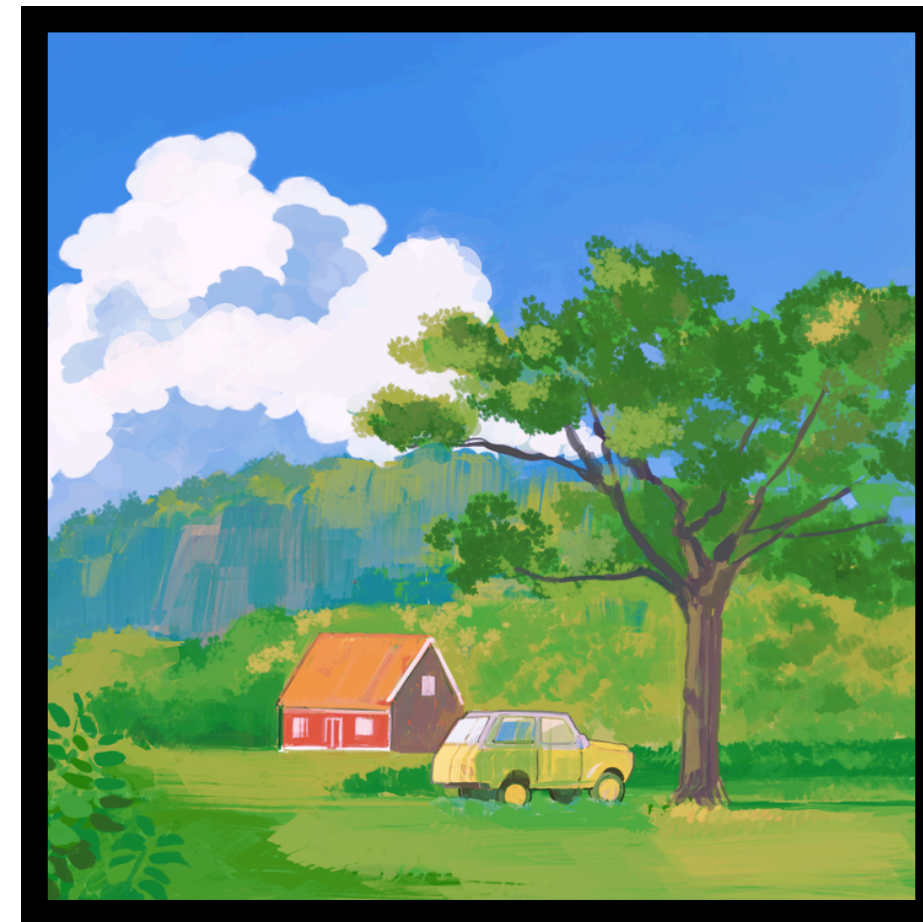


Imagine this...



Scenario

- Imagine two equally capable students:
 - One in a city with AP classes, tutors, fast Wi-Fi, internships.
 - One in a rural town with limited courses and fewer opportunities.
- Same potential. Different outcomes.





What Every Student Deserves

Definition

- High-quality education is inclusive, accessible, relevant, and empowering learning that prepares every student to succeed regardless of background or zip code.

Why It Matters:

- Builds future workforce
- Reduces inequality
- Strengthen communities
- expands lifelong opportunity





Rural Students Are Being Left Behind

Key Challenges

- Limited advanced courses (AP/STEM/world languages)
- Teacher shortages
- Transportation barriers
- Weak broadband access
- Fewer mentors/internships
- Lower college exposure

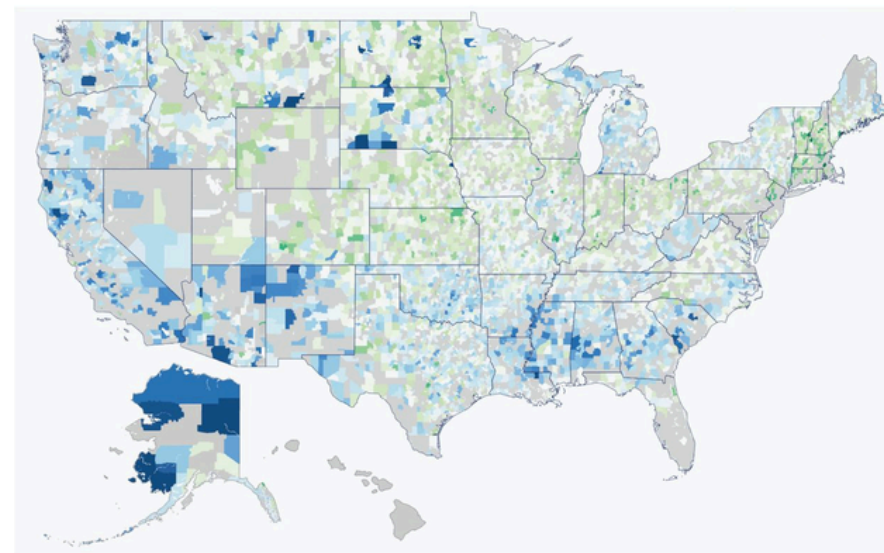


Rural Students Are Being Left Behind

Why Urgent

Students lose opportunities simply because of geography.

Figure 6. Educational Achievement Across Rural U.S. Districts



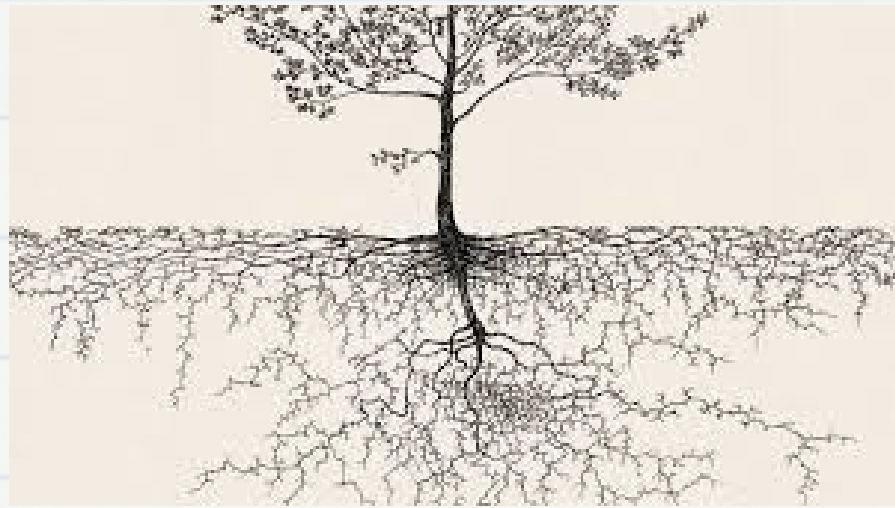
Average Test Scores By School District
in grade levels, relative to U.S. average

-3.5 0 3.5

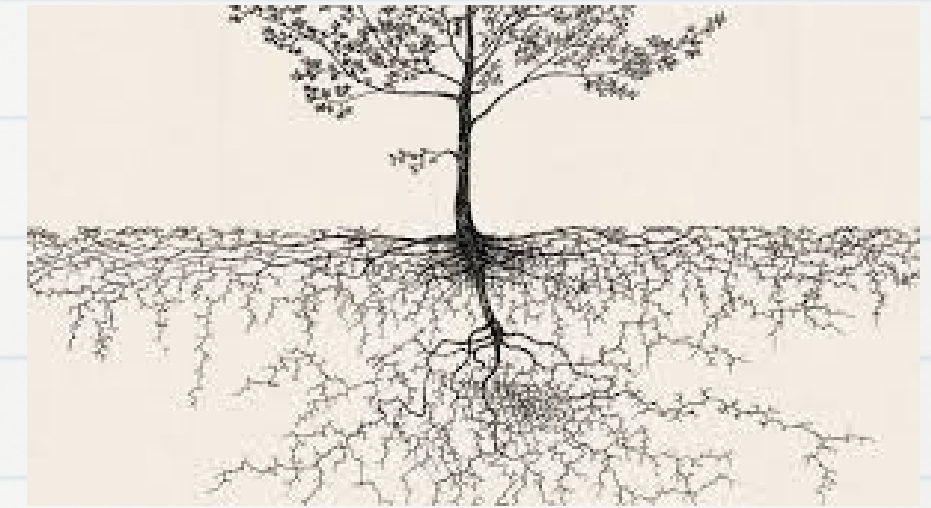
Nonrural district or no data available

Source: Educational Opportunity Project at Stanford University (<https://www.edopportunity.org>).





Root Causes



Structural

- Lower funding capacity
- Distance between communities
- Smaller school staffing pools

Technology

- Inconsistent internet infrastructure
- Limited device access

Social

- Fewer professional networks
- Less exposure to pathways after high school

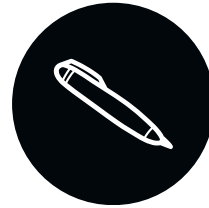
Stakeholders

Students, families, schools, universities, government, employers, nonprofits





Our Solution



Concept

A statewide hybrid learning ecosystem connecting rural students to opportunities beyond their town.

Components

1. Virtual advanced classes taught statewide
2. Mentor matching with professionals + college students
3. Career exploration and internships (remote + local)
4. Mobile learning hubs / community Wi-Fi centers
5. College and scholarship navigation support



From Isolation to Access



Phase 1

PILOT

Launch in 3 rural districts



Phase 2

PARTNERSHIP GROWTH

Partner with University of Colorado Boulder, local employers, nonprofits, state agencies



Phase 3

SALE STATEWIDE

Expand on outcomes



From Isolation to Access

LEADERSHIP LENSE:

- Transformational Leadership: Shared vision for equity
- Collaborative Leadership: Cross-sector partnerships
- Servant Leadership: Center student needs
- Adaptive Leadership: Tailor by community needs

METRICS

- Course enrollment
- Graduation rates
- College enrollment
- Internship participation
- Student confidence



No Student Should Be Limited by a Map

01



When we invest in rural students, we do not just change individual lives—we strengthen entire communities and the future of our state.

02



Reimagine education so talent everywhere has opportunity everywhere.

03



Thank You!

