

2017

Key landscape and biotic indicators of watersheds sensitivity to forest disturbance identified using remote sensing and historical hydrography data

Brian Buma

University of Alaska, Southeast

Ben Livneh

University of Colorado Boulder, ben.livneh@colorado.edu

Follow this and additional works at: https://scholar.colorado.edu/cven_facpapers

Recommended Citation

Buma, Brian and Livneh, Ben, "Key landscape and biotic indicators of watersheds sensitivity to forest disturbance identified using remote sensing and historical hydrography data" (2017). *Civil Engineering Faculty Contributions*. 9.
https://scholar.colorado.edu/cven_facpapers/9

This Article is brought to you for free and open access by Civil, Environmental, and Architectural Engineering at CU Scholar. It has been accepted for inclusion in Civil Engineering Faculty Contributions by an authorized administrator of CU Scholar. For more information, please contact cuscholaradmin@colorado.edu.

LETTER • OPEN ACCESS

Key landscape and biotic indicators of watersheds sensitivity to forest disturbance identified using remote sensing and historical hydrography data

To cite this article: Brian Buma and Ben Livneh 2017 *Environ. Res. Lett.* **12** 074028

View the [article online](#) for updates and enhancements.

Related content

- [Recent bark beetle outbreaks have little impact on streamflow in the western United States](#)
Kimberly M Slinski, Terri S Hogue, Aaron T Porter et al.
- [Hydrologic effects of large southwestern USA wildfires significantly increase regional water supply: fact or fiction?](#)
M L Wine and D Cadol
- [Increased dry season water yield in burned watersheds in Southern California](#)
Alicia M Kinoshita and Terri S Hogue

Recent citations

- [Burned forests impact water supplies](#)
Dennis W. Hallema *et al*
- [In ecoregions across western USA streamflow increases during post-wildfire recovery](#)
Michael L Wine *et al*

Environmental Research Letters



LETTER

OPEN ACCESS

RECEIVED
5 December 2016

REVISED
19 April 2017

ACCEPTED FOR PUBLICATION
2 May 2017

PUBLISHED
19 July 2017

Original content from
this work may be used
under the terms of the
[Creative Commons
Attribution 3.0 licence](#).

Any further distribution
of this work must
maintain attribution to
the author(s) and the
title of the work, journal
citation and DOI.



Key landscape and biotic indicators of watersheds sensitivity to forest disturbance identified using remote sensing and historical hydrography data

Brian Buma^{1,4} and Ben Livneh^{2,3}

¹ Department of Natural Sciences, University of Alaska Southeast, Juneau. 11120 Glacier Highway, Juneau, AK, 99801, United States of America

² Department of Civil, Environmental, and Architectural Engineering, University of Colorado, Boulder, 428 UCB, Boulder, CO, 80309, United States of America

³ Cooperative Institute for Research in Environmental Science (CIRES), University of Colorado, Boulder, 216 UCB, Boulder, CO, 80309, United States of America

⁴ Author to whom any correspondence should be addressed.

E-mail: bbuma@alaska.edu

Keywords: forest disturbance, watershed, water supply, hydrology, remote sensing, statistical modeling

Supplementary material for this article is available [online](#)

Abstract

Water is one of the most critical resources derived from natural systems. While it has long been recognized that forest disturbances like fire influence watershed streamflow characteristics, individual studies have reported conflicting results with some showing streamflow increases post-disturbance and others decreases, while other watersheds are insensitive to even large disturbance events. Characterizing the differences between sensitive (e.g. where streamflow does change post-disturbance) and insensitive watersheds is crucial to anticipating response to future disturbance events. Here, we report on an analysis of a national-scale, gaged watershed database together with high-resolution forest mortality imagery. A simple watershed response model was developed based on the runoff ratio for watersheds ($n=73$) prior to a major disturbance, detrended for variation in precipitation inputs. Post-disturbance deviations from the expected water yield and streamflow timing from expected (based on observed precipitation) were then analyzed relative to the abiotic and biotic characteristics of the individual watershed and observed extent of forest mortality. The extent of the disturbance was significantly related to change in post-disturbance water yield ($p < 0.05$), and there were several distinctive differences between watersheds exhibiting post-disturbance increases, decreases, and those showing no change in water yield. Highly disturbed, arid watersheds with low soil: water contact time are the most likely to see increases, with the magnitude positively correlated with the extent of disturbance. Watersheds dominated by deciduous forest with low bulk density soils typically show reduced yield post-disturbance. Post-disturbance streamflow timing change was associated with climate, forest type, and soil. Snowy coniferous watersheds were generally insensitive to disturbance, whereas finely textured soils with rapid runoff were sensitive. This is the first national scale investigation of streamflow post-disturbance using fused gage and remotely sensed data at high resolution, and gives important insights that can be used to anticipate changes in streamflow resulting from future disturbances.

1. Introduction

Water is one of the most critical environmental resources and is tightly linked to landscape composition (ecology), soils, and land cover change. Forested watersheds in particular are important as natural water

sources for residential, commercial, and agricultural needs around the world [NRC 2008]. But despite a long appreciation of the significance of forests to water supplies, the effect of forest disturbances (e.g. wildfire, insect outbreaks) on water yield remains difficult to predict [Hibbert 1967, Postel and Thompson 2005,

Neary *et al* 2009] and is a highly interdisciplinary problem, incorporating aspects of biology, geology, soil sciences, climatology, and hydrology. This complexity is reflected in the variety in published research; with regard to post-disturbance streamflow yield, many studies report increases in yield [Sahin and Hall 1996, Wondzell and King 2003, Brown *et al* 2005, Buma and Livneh 2015] but several find little change or a decrease in yield [e.g. Adams *et al* 2012, Biederman *et al* 2012, Biederman *et al* 2014, Brantley *et al* 2014, Biederman *et al* 2015] or increased yield transitioning to decreased after a decade or more post-disturbance [Hornbeck *et al* 1997]. In this context water yield is defined as the total annual runoff from a watershed as measured in a stream, i.e. total streamflow. In addition, while much of the attention historically has focused on sensitive watersheds, it is equally interesting to understand why some watersheds are insensitive to major disturbances which may cause substantial streamflow changes in other locations [e.g. in the context of streamwater nitrate loss, Rhoades *et al* 2013]. Knowing which watersheds are likely insensitive is a means to save managerial resources for future needs elsewhere. Anticipated changes in the future prevalence of disturbances [Dale *et al* 2001] highlights the need for a clearer understanding of which watershed features are associated with sensitivity to these events.

Vegetation exerts important controls on the hydrological functioning of most watersheds through a variety of mechanisms that impact water inputs, outputs, and flux rates [Jorgenson and Gardner 1987, Schleppe 2010]. The relationship between forest disturbances and resulting hydrologic impacts has a long research history spanning a broad range of ecosystems [McCulloch and Robinson 1993] with increasing frequency in recent decades [Hibbert 1967, Bosch and Hewlett 1982, Zhang *et al* 2001, Naranjo *et al* 2011].

The catchment water balance, and broad drivers of its change, were formalized by Horton [1933] and have received substantial attention since. Forest have an important influence on catchment water balance. Precipitation input into a catchment (fog, rain, and snow) is modulated by canopy interception and incoming/outgoing radiation are further affected by that canopy [Gustafson *et al* 2010, Harpold *et al* 2014, Veatch *et al* 2009], influencing sublimation and evaporation processes within and below the canopy [Rinehart *et al* 2008, Simonin *et al* 2009, Boon 2012, Pugh and Gordon 2013]. Belowground, tree roots alter soil properties, typically increasing infiltration and lowering the potential for evaporation [Jorgensen and Gardner 1987, Federer *et al* 2003, Guswa 2012, Miller and Zegre 2014]. Once water infiltrates into the watershed soils, vegetative transpiration is a dominant water flux from many catchments [Biederman *et al* 2015, Jasechko *et al* 2013], though discharge can be

more significant in humid/wet systems. Forests in particular lose a greater fraction of their annual precipitation to transpiration than lower biomass systems, i.e. grasslands [Zhang *et al* 2001]. Therefore, because forests are strong drivers of transpiration and because their spatial distribution is often driven by patterns of water availability [Thompson *et al* 2011], disturbance and vegetation change are critical components of streamflow patterns.

Although conceptual models have been put forward that relate vegetation disturbance with hydrological response [e.g. Pugh and Gordon 2013], the majority of empirical research has been limited to paired catchment studies, numerical modeling, and syntheses [Schleppe 2010, Mikkelsen *et al* 2013, Sahin and Hall 1996, Livneh *et al* 2015]. Brown *et al* (2005) provide a review of studies exploring the response of different forest types (conifer, deciduous, scrub) to clear-cutting disturbance, identifying characteristic responses for each forest type, and reporting an overall increase in water yield observed in response to forest loss. Experimentation in a moist temperate forested area [Hibbert 1967] demonstrated that streamflow generally increased proportionally with the degree of forest harvest. However, substantial temporal variations in this relationship have been reported there and elsewhere with streamflow increases strongly influenced by topographic characteristics [e.g. slope; Voepel *et al* 2011] and related effects such as changes in solar radiation [e.g. Douglass 1983]. While disturbances alter the relative partitioning between total evaporation and transpiration losses through a variety of site specific conditions, water yield increases are often attributed to reduced transpiration with less forest cover post-disturbance [Sahin and Hall 1996, Andreassian 2004]. Supporting this hypothesis, growth of vegetation has a negative effect on streamflow. A survey of ten catchments in the US piedmont region showed that 10%–28% increases in forest cover led to increased ET and reduced water yield by between 4%–21% [Trimble *et al* 1987]. Projections across China have similarly suggested post-afforestation declines of 10%–50% in water yield based on statistical landcover ET-precipitation relationships [Sun *et al* 2006]. Studies like Kuczera [1987] and Brookhouse *et al* [2013] report that as forests recover from disturbance, subsequent increases in water yield diminish and over time (> 10 years) can eventually reverse, becoming decreases in water yield below undisturbed levels, attributed to early successional vegetation with higher ET rates [Hornbeck *et al* 1997]. Overall, the majority of studies have posited that reduced transpiration driven by mortality [e.g. Schäfer *et al* 2014] should overwhelm the other mechanisms, leading to increases in water yield and earlier streamflow post-disturbance.

Importantly, various exceptions to the expectation of increased water yield post-disturbance have been

published recently. Some watersheds are relatively insensitive to disturbance, meaning little change is noted despite substantial vegetation change. This has been attributed to other drivers overwhelming the transpiration response, such as climate [e.g. Hallema *et al* 2016]. Unanticipated decreases in water yield post-disturbance have been attributed in part to regrowth of water-intensive understory vegetation and evaporation [Adams *et al* 2012, Biederman *et al* 2014, Biederman *et al* 2015, Fernandez *et al* 2006, Guardiola-Claramonte *et al* 2011]. Similarly, conflicting shifts in streamflow timing have been reported (i.e. changes in the date at which a given fraction of annual streamflow is observed). Several disturbance-mediated mechanisms have been identified that influence these changes, such as changes to infiltration and base-flow [Bruijnzeel 1988], soil compaction [Miller and Zegre 2014], net transmission of solar radiation [Pugh and Gordon 2013], and hydrophobicity/reduced porosity from fires [Wondzell and King 2003].

Predicting the sign of the water yield and timing change post-disturbance remains an open problem. Recent attempts at prediction have taken multiple approaches, such as portioning streamflow into fast and slow groups which have different responses to disturbance [Harman *et al* 2011], developing new indices [e.g. rain use efficiency, Troch *et al* 2009, Thompson *et al* 2013], or tying response to climate in some fashion [e.g. aridity: Budyko 1974, storminess: Milly 1994]. Applications of indices over large numbers of catchments have had mixed results due to complex topographic and climate interactions [Voepel *et al* 2011]. To date, no single feature has been identified capable of predicting the direction of watershed hydrologic sensitivity to disturbance.

To address this gap, we developed a simple model to predict change in water yield and streamflow timing post disturbance. First, we describe the shift in water yield or timing using a detrended version of runoff ratio (yield) and the centroid of yearly flow (timing; described as Julian date) which incorporates variable precipitation inputs and historical records. *In situ* and remotely sensed historical data were used to identify characteristic traits of sensitive and insensitive watersheds, using a large, continent spanning set of historical streamflow data. The unique perspective presented here is an evaluation of deviations from assumed precipitation-hydrology relationships across a range of disturbance amounts and vegetation types. Understanding which watersheds are likely sensitive to disturbance will ultimately enable better proactive management of water and forests [Douglass 1983, Thompson *et al* 2013] by enabling more informed allocation of limited managerial resources.

Our primary research goal is identifying what watershed characteristics are associated with either sensitivity to disturbances or insensitivity (no major change) in terms of both yield and streamflow timing.

2. Data sources and methodology

For a flowchart of processing steps, see figure M1. Among the 671 United States Geological Survey (USGS) watersheds identified as best representing natural flow [Newman *et al* 2015, Lins 2012], initial consideration was restricted to the 228 that are undammed, while development of the statistical modeling component was further restricted to 73 that experienced substantial disturbance during the time-period of observation (> 1% disturbed area, see below and supplementary methods available at stacks.iop.org/ERL/12/074028/mmedia). The area disturbed in each watershed was quantified on a yearly basis (2001–2010) using yearly, 30 m resolution maps of forest disturbance [Hansen *et al* 2013]. We then identified the year of the largest disturbance (total area) and focused on changes in water yield and streamflow timing in the subsequent water year (water year = 1 Oct. through 30 Sep.); as a result, if the largest disturbance year was 2010 the watershed was discarded. The year of largest forest disturbance and subsequent hydrologic response was chosen for two reasons: First, it did not constrain our focus to a single minimum cutoff disturbance extent across the entire dataset, which represents a diversity of disturbance drivers and landscapes. Second, focusing on the hydrologic response in the subsequent year allowed for clarity in the drivers of immediate hydrological change, before ecological communities have significant time to recover (though partial recovery within a single year cannot be excluded). Other drivers, such as dominant species shifts in response to the disturbance, may become significant in later years.

2.1. Simple model of expected water yield and streamflow timing change post disturbance

GIS maps of watershed boundaries [Newman *et al* 2015] were combined with precipitation from Daymet [Thornton *et al* 2014] and observed streamflow data from the USGS. Expected water yield from a watershed is commonly assessed using the Runoff Ratio ($RR = \text{total streamflow} / \text{total precipitation}$; figure 1). Runoff ratio is a means to standardize between watersheds of very different sizes and precipitation amounts by relating precipitation to water yield. Importantly, runoff ratio and streamflow timing can vary with precipitation, and the response is different between disturbed and undisturbed watersheds as demonstrated in Brown *et al* [2005]. Therefore, we first detrended the runoff ratio by observed precipitation to account for ratio variability as a function of precipitation. We developed a simple linear regression model of the expected detrended runoff ratio and streamflow timing for years prior to the disturbance. The observed runoff ratio post-disturbance was compared to expected runoff ratio, calculated using the pre-disturbance regression model and observed

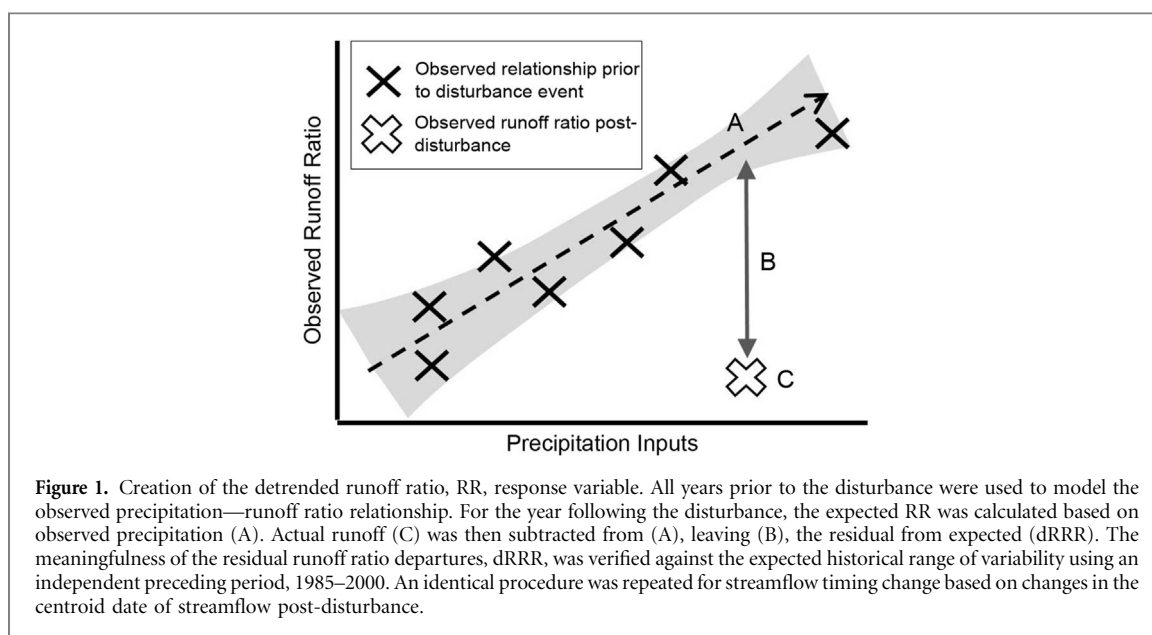


Table 1. Characteristics of the final groups for the discriminant analysis ($n = 73$).

Group	dRRR (difference in RR from expected)			Centroid timing change (days)		
	Min	Mean	Max	Min	Mean	Max
Decreasing	−0.45	−0.14	−0.05	−103	−19	−45
Insensitive	−0.04	0.01	0.06	−18	−2	13
Increasing	0.06	0.13	0.34	14	37	173

precipitation, to create the detrended residual runoff ratio (dRRR)—the amount by which the actual runoff ratio differed from expected in the absence of a disturbance and given the observed precipitation in the year immediately following the disturbance. This is our measure of sensitivity; i.e. deviation from expected behavior.

2.1.1. Grouping watersheds

Selecting watersheds for the final analysis was a two-step process, involving grouping all watersheds into general post-disturbance response groups (streamflow: increasing, insensitive, or decreasing; timing: earlier, insensitive, later) and then sub-setting to highly disturbed watersheds. First, undammed watersheds ($n = 228$) were grouped into three categories based on post-disturbance behavior: sensitive (increasing or decreasing) or insensitive. The watersheds were divided by percentiles based on hydrologic response—those that experienced large decreases in water yield (bottom 25%, dRRR highly negative [mean -18% change in RR from expected]), those that were relatively insensitive (middle 50%, dRRR approximately zero [mean $+0.1\%$ change in RR]), and those where water yield increased (top 25%, dRRR highly positive [mean $+13\%$ change in RR]; figure S1). Finally, since not all the watersheds experienced a major disturbance during the time period of observation, only watersheds with a disturbance exceeding 1% of their total area in at least one year were retained; 32% of the

undammed watersheds met this criterion (final $n = 73$; 14 in the decreasing yield group, 37 in the insensitive group, and 22 in the increasing yield group). All watersheds in the negative group showed a decline in RR, all watersheds in the positive group show an increase, and the insensitive group showed little deviation from expected (table 1). The watersheds were well distributed spatially with a range of drainage areas (mean = 399 km², SD = 582 km²), climates (annual precipitation: mean = 1430 mm, SD = 740 mm; annual temperature: mean = 10.3 °C, SD = 5.4 °C), and land cover types (figure S2).

The fact that the magnitude change of the decreasing group is of similar magnitude to the increasing group represents a departure from the expectation of previous paired-catchment work (e.g. Bosch and Hewlett 1982) and instead is more in line with newer studies such as Guardiola-Claramonte *et al* [2011] that use a pre- and post-disturbance runoff ratio approach and find decreases in streamflow in some cases. Our method calculates a detrended runoff ratio residual, which although similar to the latter study, is unique, since it considers and controls for the influences of wet and dry years (known to influence runoff ratio) on streamflow response.

Partitioning into response groups was done based on the relative magnitude of streamflow change rather than a statistical threshold because of the limited number of years of satellite disturbance data [Hansen *et al* 2013], extending back only to 2000. This meant

watersheds had differing numbers of years prior to the disturbance from which to develop our model. For example, a major disturbance in 2007 would result in 6 prior years of runoff-ratio data versus a disturbance in 2005, which would have 4 prior years. The asynchronous effect of disturbance and data availability complicate subsequent statistical analysis of the response groups (variable statistical power), although we report the significance of the changes in streamflow relative to historical variability in the next section. Furthermore, we use percentile groupings (positive, no change, negative) rather than simple percentage thresholds (e.g. $>-5\%$, -5 to $+5\%$, and $>5\%$ change in RR) to avoid making arbitrary numerical cutoffs in the data. However, the end result was balanced, as the percentile cutoffs were -0.45% and $+0.5\%$ for the decreasing and increasing yield groups respectively (table 1).

As a secondary check that the sensitive groups (increased or decreased yield) were associated with substantial changes in historical streamflow amount or timing, we constructed an estimate of detrended runoff ratio variability for each watershed from 1985 to 2000 as a control. Linear precipitation-RR relationships for each watershed were used to calculate the expected 95% prediction interval. We then compared the observed post-disturbance RR and precipitation to verify that the post-disturbance RR change was outside the expected RR range of variability using the control 1985–2000 time period. 93% of the watersheds with decreased streamflow post-disturbance were outside the 1985–2000 precipitation-RR relationship inter-annual variability envelope whereas 60% of the watersheds with increasing streamflow were outside the interval. This indicates that the grouping based on percentiles is statistically meaningful; in other words, the majority of the increasing and decreasing response groups were significantly different from their historical norms, regardless of the proportion disturbed.

Streamflow timing change was calculated in an identical way as RR, except using the centroid of the runoff response: the date each year on which 50% of daily flow had been observed. The same detrending and grouping procedure based on percentiles was employed for streamflow timing yielding an earlier group (mean 47 days before expected, $n = 20$), no change (mean 3 days before expected, $n = 34$), and later group (mean 51 days after expected, $n = 19$, figure S1).

2.1.2. Model development

To identify watershed characteristics which differentiated sensitive from non-sensitive watersheds, we associated post-disturbance watershed response with 75 vegetative, climatic, soil, and disturbance characteristics [Falcone *et al* 2010] in a linear discriminant analysis (LDA) framework. A complete description of the predictor variables, including how they are calculated and original data sources, are in table S1. The LDA methodology is a supervised technique

which uses groups identified *a priori* (the three post-disturbance response groups) and identifies which linear combination of variables best differentiates between those groups. However, because the LDA methodology is sensitive to the range of variability and correlation across variables, two preliminary steps were taken. First, variables were scaled (normalized) giving them a mean value of zero and standard deviation of one. Second, to reduce the inter-correlation and total number of potential explanatory variables, group membership was modeled using the Random Forests technique [Breiman 2001]. The top 25 most explanatory variables from that framework were then used in the LDA analysis. This was done separately for water yield and streamflow timing, resulting in different potential variables for each.

The final 25 variables were combined via the LDA to determine the most significant features which differentiate one response group from another using the caret package in R (Kuhn 2008). To assess if final groupings were significantly different from each other Kruskal–Wallis nonparametric tests were used. A detailed methodology, including full variable selection procedures, is found in Supplementary Methods.

3. Results and discussion

Both water yield changes and streamflow timing showed relationships to disturbance, but in different contexts and with differing magnitudes (examples: table 2). The majority of disturbed watersheds displayed either little change ($n = 37$) or an increase in streamflow ($n = 22$), with a minor component showing streamflow declines ($n = 14$). The strongest predictors of group membership are shown in figure 2. Overall classification accuracy was 84% for predicting water yield change (95% confidence interval: 73.1%–91.2%), and significantly better than the null hypothesis of no response ($p < 0.00001$) and 74% for predicting streamflow timing change (95% confidence interval: 0.62%–0.84%, $p = 0.003$).

3.1. Water yield change

Disturbance from a combination of natural and anthropogenic sources was the most important variable in predicting post-disturbance yield change, with larger disturbances associated with increased runoff ($p < 0.01$). Cumulatively, watersheds with increased water yield had a significantly higher ($p < 0.01$) percent of their forested area disturbed (group mean 47%, median 15%) compared to those with decreased water yield (mean 16%, median 9%) or did not change (mean 10%, median 9%). Watersheds with persistent disturbances, measured as cumulative (multi-year) area disturbed prior to the major disturbance year, were more sensitive to a large disturbance event in a single year than those without persistent disturbances.

Table 2. Examples of both highly and lightly disturbed watersheds used in the final analysis. The USGS stream gage ID and approximate location are included. Watershed characteristics are a subset of all the characteristics that were considered in the development of the model. For all variables, see supplementary data for distributions and the GAGES-II database (Falcone *et al* 2010) for complete derivation methods.

ID	Lat.	Long.	Disturbed percent	Drainage size (km ²)	Mean Precip. (cm)	Contact time (days)	Fragmentation Index ^a	Deciduous cover (percent)	dRRR	Timing change (days)	Group for yield	Group for timing
11098000	34.2	-118.2	0.62	41.60	78.85	6.50	16.60	0.00	0.10	-1.38	Increase	Insens.
12447390	48.8	-120.1	0.62	58.10	88.33	13.40	3.00	0.00	-0.01	-35.09	Insens. ^b	Earlier
12374250	47.8	-114.7	0.56	50.80	57.97	16.10	3.00	0.00	0.13	7.39	Increase	Insens.
11124500	34.6	-119.9	0.50	191.50	83.10	26.40	3.50	0.01	0.15	-28.49	Increase	Earlier
13235000	44.1	-115.6	0.03	1163.20	101.19	16.80	2.30	0.42	0.03	5.96	Insens.	Insens.
08269000	36.4	-105.5	0.03	163.30	63.82	8.50	1.70	5.13	-0.02	10.72	Insens.	Insens.
14222500	45.8	-122.5	0.03	323.90	334.17	49.40	9.90	2.34	-0.04	-9.20	Insens.	Insens.
07340300	34.4	-94.2	0.01	230.40	157.30	83.60	9.20	58.97	-0.18	14.66	Decrease	Later
02381600	34.6	-84.5	0.01	10.30	159.91	50.80	38.30	70.21	-0.23	-20.10	Decrease	Earlier
14306500	44.4	-123.8	0.01	857.20	210.88	26.00	21.10	2.50	-0.06	20.93	Decrease	Later

^a Low is unfragmented, high is highly fragmented.

^b Insensitive.

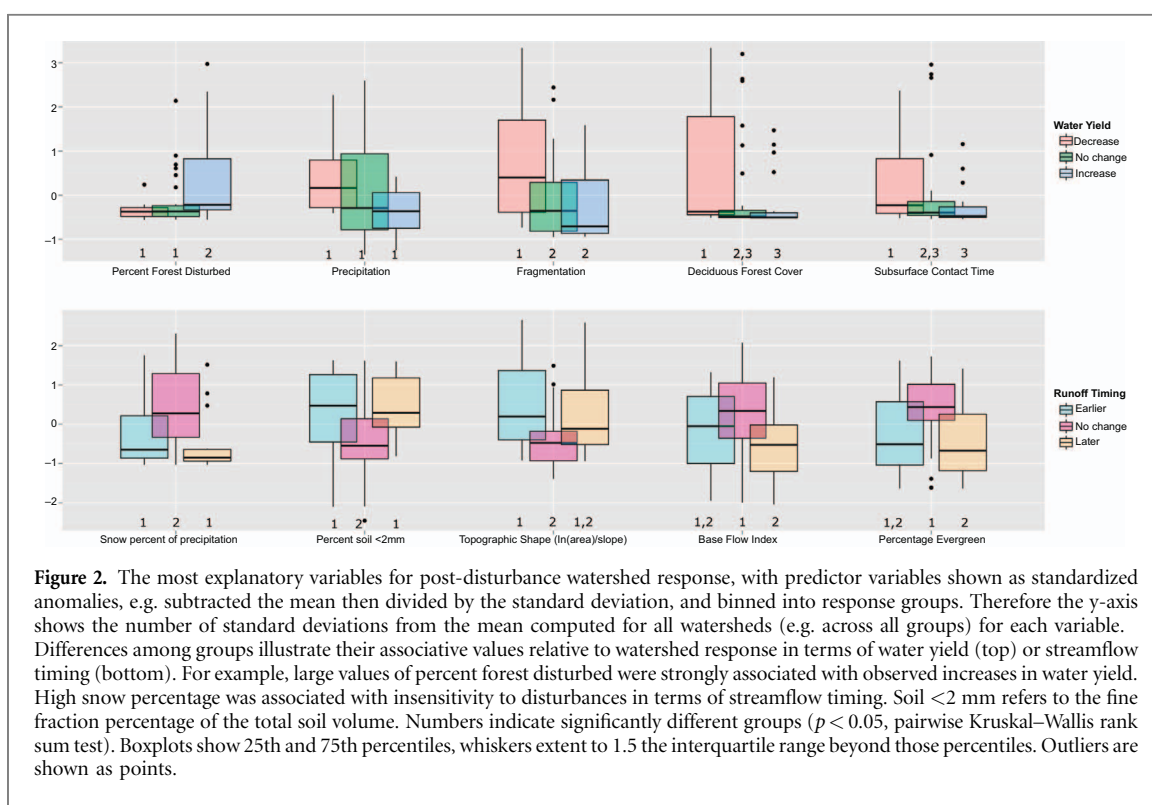
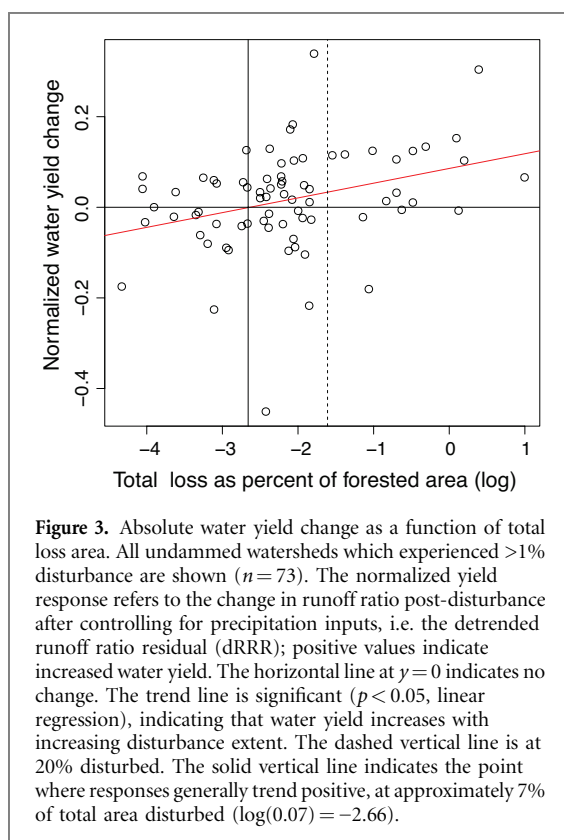


Figure 2. The most explanatory variables for post-disturbance watershed response, with predictor variables shown as standardized anomalies, e.g. subtracted the mean then divided by the standard deviation, and binned into response groups. Therefore the y-axis shows the number of standard deviations from the mean computed for all watersheds (e.g. across all groups) for each variable. Differences among groups illustrate their associative values relative to watershed response in terms of water yield (top) or streamflow timing (bottom). For example, large values of percent forest disturbed were strongly associated with observed increases in water yield. High snow percentage was associated with insensitivity to disturbances in terms of streamflow timing. Soil <2 mm refers to the fine fraction percentage of the total soil volume. Numbers indicate significantly different groups ($p < 0.05$, pairwise Kruskal–Wallis rank sum test). Boxplots show 25th and 75th percentiles, whiskers extent to 1.5 the interquartile range beyond those percentiles. Outliers are shown as points.

The trend in water yield change was also compared to the percent of the watershed disturbed without grouping watersheds. Disturbances greater than > 7% of the forested area were associated with increased water yield, while disturbances greater than > 20% showed even greater increases ($p < 0.05$; figure 3). This is consistent with previous studies associating streamflow increases with disturbance, but also with the notion of a minimum disturbance threshold for detecting hydrologic response [Brown *et al* 2005, Bosch and Hewlett 1982, Stednick 1996]. Interestingly, a disturbance threshold of 20% disturbed area was previously proposed [Stednick 1996] as the minimum for detecting yield changes (typically increasing) in

forested watersheds, though recent, more fine-scaled work has found responses at smaller harvest areas [e.g. Hornbeck *et al* 1997] and others have suggested that watershed size plays a role in the disturbance area-streamflow response relationship, with smaller headwater watersheds likely less sensitive than the larger watersheds [Trimble *et al* 1987]. Our findings demonstrate that observable hydrologic responses can be detected for smaller disturbance extents (<20%) at multiple watershed sizes.

Watersheds where *dRRR* was highly positive, meaning more runoff than expected after accounting for precipitation, had generally higher percentage of area disturbed, lower precipitation, lower fragmentation,



and lower deciduous forest cover (and thus higher coniferous and mixed forest cover), and lower subsurface contact time, a measure of the residence time (days) of water in the saturated subsurface zone of the watershed [Falcone *et al* 2010, figure 2]. Average soil bulk density (g cm^{-3}) was also significantly higher in watersheds with increased RR post-disturbance compared to insensitive or declining RR watersheds, as was permeability (though not significantly so).

Insensitive watersheds generally exhibited intermediate values of the explanatory variables relative to those watersheds that increased or decreased their yields. This intermediate relationship was true for all the top five variables identified (figure 2). For example, median precipitation was highest in watersheds that decreased their water yield post-disturbance, and was sequentially higher in the no-change, and decreasing groups, respectively.

Interestingly, wet regions (high precipitation) were generally associated with a lower RR than expected post-disturbance (figure 2). We hypothesize that this occurs when rapid (within a year of disturbance, and thus included in our methods) understory regrowth/rapid recovery of post-disturbance vegetation (such as the filling of small, gap openings by neighboring trees) compensates for canopy loss [Helvey and Tiedemann 1978, Runkle 1982, Buchanan and Hart 2012] as biological structures, e.g. leaves, are rebuilt [Trimble *et al* 1987, Hornbeck *et al* 1997, Fernandez *et al* 2006, Brookhouse *et al* 2013]. We note that high fractions of deciduous cover (often re-sprouting species) and longer contact time between water and soil, and thus

plant available water, are strong predictors for water yield reduction post-disturbance, similar to previous work [Voepel *et al* 2011, Jasechko *et al* 2013, Brantley *et al* 2014]. This outcome is also in partial agreement with previous research which found that clear-cut deciduous and grassland dominated watersheds typically show smaller increases in water yield compared to coniferous forests [Sahin and Hall 1996, Bosch and Hewlett 1982].

3.2. Streamflow timing change

There was a significant relationship between streamflow timing change and water yield change, with earlier streamflow associated with increases in water yield (chi-squared test, $p < 0.05$, figure S3). Earlier streamflow timing was also associated with greater percent of the watershed disturbed (mean percent disturbed 8.6%, median 2.7%) relative to no change (mean 6.9%, median 2.6%) and later timing (mean 5.7%, median 2.0%). In contrast to water yield, the strongest contrast was between insensitive and sensitive watersheds, not between the sign of response of the sensitive groups (figure 2, bottom row). Insensitive watersheds generally had a higher percentage of snow, lower percentage of fine soils, and steeper slopes. We hypothesize that the insensitivity seen here is a result of temporally dependent factors driving streamflow timing (e.g. yearly weather driving early or late snowmelt) rather than disturbance characteristics. The lack of distinguishing characteristics among sensitive watersheds (e.g. earlier vs. later) was surprising, and suggests that the relevant drivers are not static watershed features, like slope. Disturbance characteristics are potential explanations, for example fire can dramatically alter runoff rates by increasing hydrophobicity [Wondzell and King 2003], whereas insect mortality does not have, nor is expected to have, the same effect [Helvey and Tiedemann 1978, Pugh and Gordon 2013]. Vegetation composition is also likely important; watersheds with extensive shrublands showed later streamflow timing (mean 25.5% shrubland) relative to the insensitive and earlier streamflow groups (19.3% and 16.1% shrubland, respectively). This research did not focus on multi-year forest recovery and was only interested in hydrological response in the year following disturbance. Overall the finding of later streamflow timing in watersheds with high shrubland coverage is consistent with research suggesting delayed streamflow timing is driven by understory and shrub regeneration [Johnson and Kovner 1956, Fernandez *et al* 2006, Guardiola-Claramonte *et al* 2011].

4. Conclusions

Vegetation is an important mediator of water movement into and out of catchments multiple scales [Thompson *et al* 2011] and as a result, vegetation

disturbance can cause substantial water balance variability. Previous research looking for broad scale patterns frequently used indices as a means to predict hydrological response to vegetation disturbance. For example, reductions in catchment vapor, i.e. ET, loss as it relates to the watershed Horton Index (ratio of total vapor losses to plant-available water) and partitioning flow into fast and slow components were identified as useful predictors of watershed response [Voepel *et al* 2011, Harman *et al* 2011]. Here we take a different, but complimentary approach by utilizing extensive spatial information on soils, climate, and anthropogenic activities and statistical associations to further refine our understanding of vegetation change and streamflow response. Although regional precipitation trends likely exist during the study period, the detrending of response variables (dRRR and timing) by observed precipitation minimizes the influence of any regional climatic trends over that time. Water yield changes are observable despite the fact that our analysis did not differentiate between disturbance type (fire, insect mortality, harvest, etc.). This stands as a limitation of currently available highly validated remote sensing products. Management treatments, such as clear cutting vs. partial harvest, can be designed to alter water yield intentionally [Douglass 1983], and different anthropogenic disturbances influence hydrology in unique ways [Hornbeck *et al* 1997]. This study did not distinguish those treatments with other forms of disturbance. In some cases, specific disturbance processes may result in differing effects, such as forest declines; a recent review suggested that low precipitation, rain dominated watersheds were more likely to experience no change or decreased streamflow [Adams *et al* 2012]. The work presented here also did not consider potential land use changes post-disturbance, such as appropriating forests for agriculture. Despite these limitations, and the resultant unaccounted for variability in observed response, predictable patterns were seen at the national level. Future work should incorporate longer historical time horizons, using paleo reconstructions of disturbance events and subsequent water proxy responses (e.g. tree ring methodologies) to determine historical variability.

At this broad scale, which spans multiple climate contexts, topographic and soil settings, and disturbance processes, we suggest the link between water yield and streamflow timing immediately post-disturbance, at the study scale, can be primarily attributed to soil conditions and disturbance extent. First, the residence time of water in the soil was shown to be critical: Longer soil contact time/slower drainage [Wolock *et al* 1989, Wolock 1997] makes water more readily available for ET losses. This outcome corresponds to another broad-scale analysis by Voepel *et al* [2011] which found that steeper slopes correspond with decreases in relative vaporization by vegetation. Lower residence times in the soil would

serve to increase the likelihood of increased streamflow post-disturbance because a lower fraction of water is interacting with vegetation pre-disturbance. Using a larger subset of the same dataset, Harman *et al* [2011] similarly found the fraction of water in the surface soil layers (fast component) varied more rapidly than deeper moisture in response to yearly climate, partially mediated through changes in vegetation activity and associated ET controls. While Voepel *et al* [2011] utilized topography as a proxy for partitioning water into plant-available and subsurface fractions, here we found a stronger relationship to subsurface contact time, a more integrated variable that includes both soil information and topography [Wolock 1997]. This characteristic is generally considered static across time, dependent on soil and topography (figure S4), however we acknowledge that soil properties can be altered by disturbance e.g. post-fire soil hydrophobicity decreases contact time.

Second, disturbance extent was shown to strongly influence water yield, with a significant but small effect on streamflow timing. Increasing water yield with increasing disturbance extent supports the idea that transpiration reductions are the primary driver of water yield change post-disturbance (e.g. Johnson and Kovner 1956). Yet, rapid recovery of hydrological functioning has been observed in several systems [Guardiola-Claramonte *et al* 2011, Brantley *et al* 2014, Brookhouse *et al* 2013] and is likely favored by low severity disturbance events. For example, forests recover quickly (e.g. over the subsequent growing season) from many non-lethal defoliators, rapidly rebuilding water intensive structures. Recovery from wildfires can similarly be enough to partially mitigate hydrological impacts [Hallemma *et al* 2016]. As a result, impacts to water supplies are typically minor and only observed in extreme years [Helvey and Tiedemann 1978]. This recovery pathway stands in contrast to lethal insect outbreaks, from which forests and forest hydrology may take decades to recover [Pugh and Gordon 2013]. The results presented here highlight how local contexts constrain and influence any disturbance effects on immediate hydrological properties, and should be interpreted at the scale of individual watersheds by local research and expert knowledge.

A novel feature of this work is the implementation of a broad set of mechanistic variables (e.g. soil-water contact time) and an extremely wide range of disturbance severities over a large number of watersheds. As the regional distribution of precipitation changes due to shifting climates, areas of relative water scarcity and surplus will be further modulated by forest dynamics. Understanding the sensitivity of water-supplying landscapes to forest disturbance will become increasingly important. Some of the characteristics identified here may themselves respond to climate change, such as shifting forest composition and snow fractions. Future efforts to integrate

plot-scale theory and *in situ* observations together with emerging national-scale disturbance datasets will help to refine predictions of watershed-disturbance responses.

Acknowledgments

This work was partially supported by Alaska EPSCoR NSF award #OIA-1208927. Publication of this article was funded by the University of Colorado Boulder Libraries Open Access Fund. Supporting data, intermediate results, and all final coefficients can be found in the supplementary data. R code is available from the authors. We thank Paul Brooks and two anonymous reviewers for constructive comments on previous versions of the manuscript.

References

- Adams H D *et al* 2012 Ecohydrological consequences of drought and infestation triggered die-off: Insights and hypotheses *Ecohydro.* **5** 145–59
- Alila Y, Kuras P K, Schnorbus M and Hudson R 2009 Forests and floods: A new paradigm sheds light on age-old controversies *Water Res. Research* **45** 1–24
- Andreassian V 2004 Waters and forests: from historical controversy to scientific debate *J. Hydrol.* **291** 1–27
- Biederman J A, Brooks P D, Harpold A A, Gochis D J, Gutmann E, Reed D E, Pendall E and Ewers B E 2012 Multiscale observations of snow accumulation and peak snowpack following widespread, insect-induced lodgepole pine mortality *Ecohydro* **7** 150–62
- Biederman J A, Harpold A A, Gochis D J, Ewers B E, Reed D E, Papuga S A and Brooks P D 2014 Increased evaporation following widespread tree mortality limits streamflow response *Water Res. Research* **50** 5395–409
- Biederman J A, Somor A J, Harpold A A, Gutmann E D, Breshears D D, Troch P A and Brooks P D 2015 Recent tree die-off has little effect on streamflow in contrast to expected increases from historical studies *Water Res. Research* **51** 9775–89
- Boon S 2012 Snow accumulation following forest disturbance *Ecohydrology* **5** 279–85
- Bosch J M and Hewlett J D 1982 A review of catchment experiments to determine the effect of vegetation changes on water yield and evapotranspiration *J. Hydrol.* **55** 3–23
- Brantley S T, Miniati C F, Elliott K J, Laseter S H and Vose J M 2014 Changes to southern Appalachian water yield and stormflow after loss of a foundation species *Ecohydro.* **8** 518–28
- Breiman L 2001 Random Forests *Machine Learning* **45** 5–32
- Brookhouse M T, Farquhar G D and Roderick M L 2013 The impact of bushfires on water yield from south-east Australia's ash forests *Water Res. Research* **49** 4493–505
- Brown A E, Zhang L, McMahon T A, Western A W and Vertessy R A 2005 A review of paired catchment studies for determining changes in water yield resulting from alterations in vegetation *J. Hydrol.* **310** 28–61
- Bruijnzeel L A 1988 (De)forestation and dry season flow in the tropics: A closer look *J. Trop. Forest Sci.* **1** 229–43
- Buchanan M L and Hart J L 2012 Canopy disturbance history of old-growth Quercus alba sites in the eastern United States: examination of long-term trends and broad-scale patterns *Forest Ecol. Manage.* **267** 28–39
- Budyko M I 1974 *Climate and life* (New York: Elsevier USA) p 508
- Buma B and Livneh B 2015 Potential effects of forest disturbances and management on water resources in a warmer climate *Forest Sci.* **61** 895–903
- Dale V H *et al* 2001 Climate change and forest disturbances *BioScience* **51** 723–34
- Douglass J E 1983 The potential for water yield augmentation from forest management in the Eastern United States *Water Res. Bulletin* **19** 351–58
- Falcone J A, Carlisle D M, Wolock D M and Meador M R 2010 GAGES: A stream gage database for evaluating natural and altered flow conditions in the conterminous United States *Ecological Archives* **E01–45**
- Federer C A, Vorosmarty C and Fekete B 2003 Sensitivity of annual evaporation to soil and root properties in two models of contrasting complexity *J. Hydrometeorology* **4** 1276–90
- Fernandez C, Vega J A, Gras J M and Fonturbel T 2006 Changes in water yield after a sequence of perturbations and forest management practices in a Eucalyptus globulus watershed in northern Spain *Forest Ecol. Manage.* **234** 275–81
- Guardiola-Claramonte M *et al* 2011 Decreased streamflow in semi-arid basins following drought-induced tree die-off: a counter-intuitive and indirect climate impact on hydrology *J. Hydrol.* **406** 225–33
- Gustafson J R, Brooks P D, Molotch N P and Veatch W C 2010 Estimating snow sublimation using natural chemical and isotopic tracers across a gradient of solar radiation *Water Res. Research* **46** W12511
- Guswa A J 2012 Canopy vs. roots: Production and destruction of variability in soil moisture and hydrologic fluxes *Vadose Zone J.* **11** 1–13
- Hallema D W, Sun G, Caldwell P V, Norman S P, Cohen E C, Liu Y, Ward E J and McNulty S G 2016 Assessment of wildland fire impacts on watershed annual water yield *Ecohydrology*, in press
- Hansen M C *et al* 2013 High-resolution global maps of 21st-century forest cover change *Science* **342** 850–53
- Harman C H, Troch P A and Sivapalan M 2011 Functional model of water balance variability at the catchment scale: Elasticity of fast and slow runoff components to precipitation change in the continental United States *Water Res. Research* **47** W02523
- Harpold A A, Biederman J A, Condon K, Merino M, Korgaonkar Y, Nan T and Brooks P D 2014 Changes in snow accumulation and ablation following the Las Conchas Forest Fire, New Mexico, USA *Ecohydrology* **7** 440–52
- Helvey J D and Tiedemann A R 1978 Effects of Defoliation by Douglas-fir Tussock Moth on Timing and Quantity of Streamflow. USDA Forest Service Research Notes PNW-326
- Helvey J D and Patric J H 1988 Research on interception losses and soil moisture relationships In *Forest hydrology and ecology at Coweeta* (New York: Springer) pp 129–37
- Hibbert A R 1967 Forest treatment effects on water yield ed Sopper W E, Lull H W *Forest Hydrology, Proceedings of a National Science Foundation Advanced Science Seminar* (Oxford: Pergamon) pp 527–43
- Hornbeck J W, Martin C W and Eagar C 1997 Summary of water yield experiments at Hubbard Brook experimental forest, New Hampshire *Can. J. Forest Res.* **27** 2043–52
- Horton R E 1933 The role of infiltration in the hydrologic cycle *Eos Transactions American Geophysical Union* **14** 446–60
- Jasechko S *et al* 2013 Terrestrial water fluxes dominated by transpiration *Nature* **496** 347–50
- Johnson E A and Kovner J L 1956 Effect on streamflow of cutting a forest understory *Forest Sci.* **2** 82–91
- Jorgensen D W and Gardner T W 1987 Infiltration capacity of disturbed soils: Temporal changes and lithological controls *JAWRA* **23** 1161–72
- Kuczera G 1987 Prediction of water yield reductions following a bushfire in ash-mixed species Eucalypt forests *J. Hydro.* **94** 215–36

- Kuhn M 2008 Caret package *J. Stat. Software* **28** 1–26
- Lins H F 2012 USGS Hydro-Climatic Data Network 2009 (HCDN-2009): US Geological Survey Fact Sheet 2012–3047 pp 4 (<https://pubs.usgs.gov/fs/2012/3047/>)
- Livneh B *et al* 2015 Catchment response to bark beetle outbreak in the upper Colorado River basin *J. Hydrol.* **523** 196–210
- McCulloch JSG and Robinson M 1993 History of forest hydrology *J. Hydrol.* **150** 189–216
- Mikkelsen K *et al* 2013 Bark beetle infestation impacts on nutrient cycling, water quality and interdependent hydrological effects *Biogeochem.* **115** 1–21
- Miller A J and Zegre N P 2014 Mountaintop removal mining and catchment hydrology *Water* **6** 472–99
- Milly P C D 1994 Climate, soil water storage, and the average annual water balance *Water Resour. Res.* **30** 2143–56
- Naranjo JAB, Stahl K and Weiler M 2011 Evapotranspiration and land cover transitions: Long-term watershed response in recovering forested ecosystems *Ecohydrology* **5** 721–32
- National Research Council 2008 Hydrologic Effects of a Changing Forest Landscape Barten P K (chair) (Washington DC: The National Academies Press) pp 167
- Nearly D G, Ice G G and Jackson C R 2009 Linkages between forest soils and water quality and quantity *Forest Ecol. Manage.* **258** 2269–81
- Newman A J *et al* 2015 Development of a large-sample watershed-scale hydrometeorological data set for the contiguous USA: data set characteristics and assessment of regional variability in hydrologic model performance *Hydrol. Earth Sys. Sci.* **19** 209–23
- Postel S L and Thompson B H 2005 Watershed protection: Capturing the benefits of nature's water supply services *Nat. Res. Forum* **29** 98–108
- Pugh E and Gordon E A 2013 A conceptual model of water yield effects from beetle-induced tree death in snow-dominated lodgepole pine forests *Hydro. Process.* **27** 2048–60
- Rhoades C C *et al* 2013 Biogeochemistry of beetle-killed forests: Explaining a weak nitrate response *PNAS* **110** 1756–60
- Rinehart A J, Vivoni E R and Brooks P D 2008 Effects of vegetation, albedo, and solar radiation sheltering on the distribution of snow in the Valles Caldera, New Mexico *Ecohydrology* **1** 253–70
- Runkle J R 1982 Patterns of disturbance in some old-growth mesic forests of eastern North America *Ecology* **63** 1533–46
- Sahin V and Hall M J 1996 The effects of afforestation and deforestation on water yields *J. Hydrol.* **176** 293–309
- Schäfer K V R, Renninger H J, Clark K L and Medvigy D 2014 Hydrological responses to defoliation and drought of an upland oak/pine forest *Hydro. Process.* **28** 6113–23
- Schleppi P 2010 Forested water catchments in a changing environment *Forest Management and the Water Cycle* (Netherlands: Springer) pp 89–110
- Simonin K A, Santiago L S and Dawson T E 2009 Fog interception by Sequoia sempervirens (D. Don) crowns decouples physiology from soil water deficit *Plant Cell Environ.* **32** 882–92
- Stednick J D 1996 Monitoring the effects of timber harvest on annual water yield *J. Hydrol.* **176** 79–95
- Sun G, Zhou G, Zhang Z, Wei X, McNulty S G and Vose J M 2006 Potential water yield reduction due to forestation across China *J. Hydrology* **328** 548–58
- Thompson M P *et al* 2013 Assessing watershed-wildfire risks on national forest system lands in the rocky mountain region of the United States *Water* **5** 945–71
- Thompson S E, Harman C J, Troch P A, Brooks P D and Sivapalan M 2011 Spatial scale dependence of ecohydrologically mediated water balance partitioning: A synthesis framework for catchment ecohydrology *Water Res. Research* **47** 1–20
- Thornton P E *et al* 2014 Daymet: Daily surface weather data on a 1 km grid for North America ORNL DAAC, Oak Ridge, Tennessee, USA
- Trimble S W, Weirich F H and Hoag B L 1987 Reforestation and the reduction of water yield on the Southern Piedmont since circa 1940 *Water Res. Research* **23** 425–37
- Troch P A, Martinez G F, Pauwels V, Durcik M, Sivapalan M, Harman C and Huxman T 2009 Climate and vegetation water use efficiency at catchment scales *Hydro. Process.* **23** 2409–14
- Veatch W, Brooks P D, Gustafson J R and Molotch N P 2009 Quantifying the effects of forest canopy cover on net snow accumulation at a continental, mid-latitude site *Ecohydro.* **2** 115–28
- Voepel H *et al* 2011 Quantifying the role of climate and landscape characteristics on hydrologic partitioning and vegetation response *Water Res. Research* **47** W00J09
- Wolock D M 1997 STATSGO soil characterization for the conterminous United States. Digital Data Release. US Geological Survey, Lawrence, KS, USA
- Wolock D M, Hornberger G M, Beven K J and Campbell W G 1989 The relationship of catchment topography and soil hydraulic characteristics to lake alkalinity in the northeastern United States *Water Resources Res.* **25** 829–37
- Wondzell S M and King J G 2003 Postfire erosional processes in the Pacific Northwest and Rocky Mountain regions *Forest Ecol. Manage.* **178** 75–87
- Zhang L, Dawes W R and Walker G R 2001 Response of mean annual evapotranspiration to vegetation changes at catchment scale *Water Res. Research* **37** 701–8